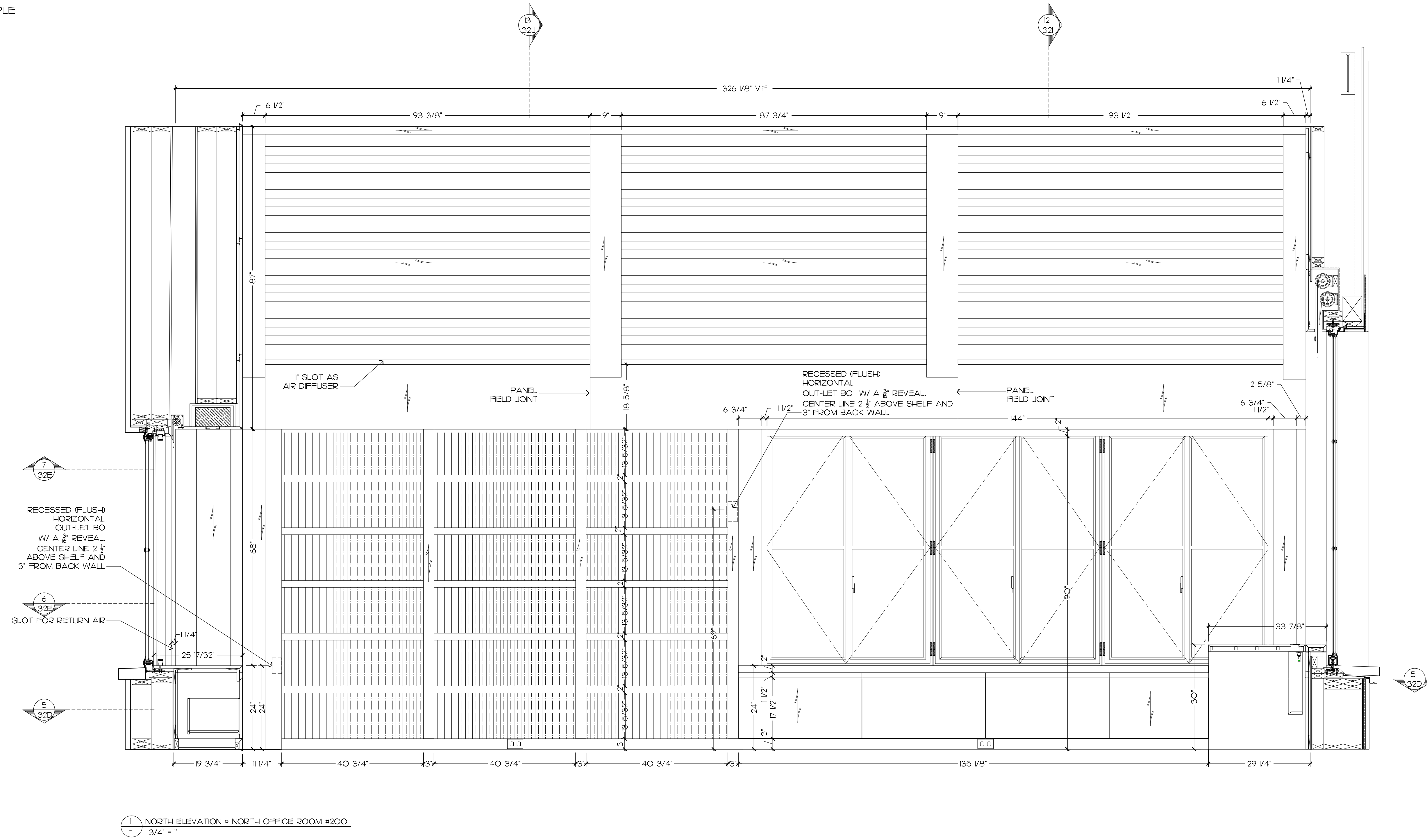


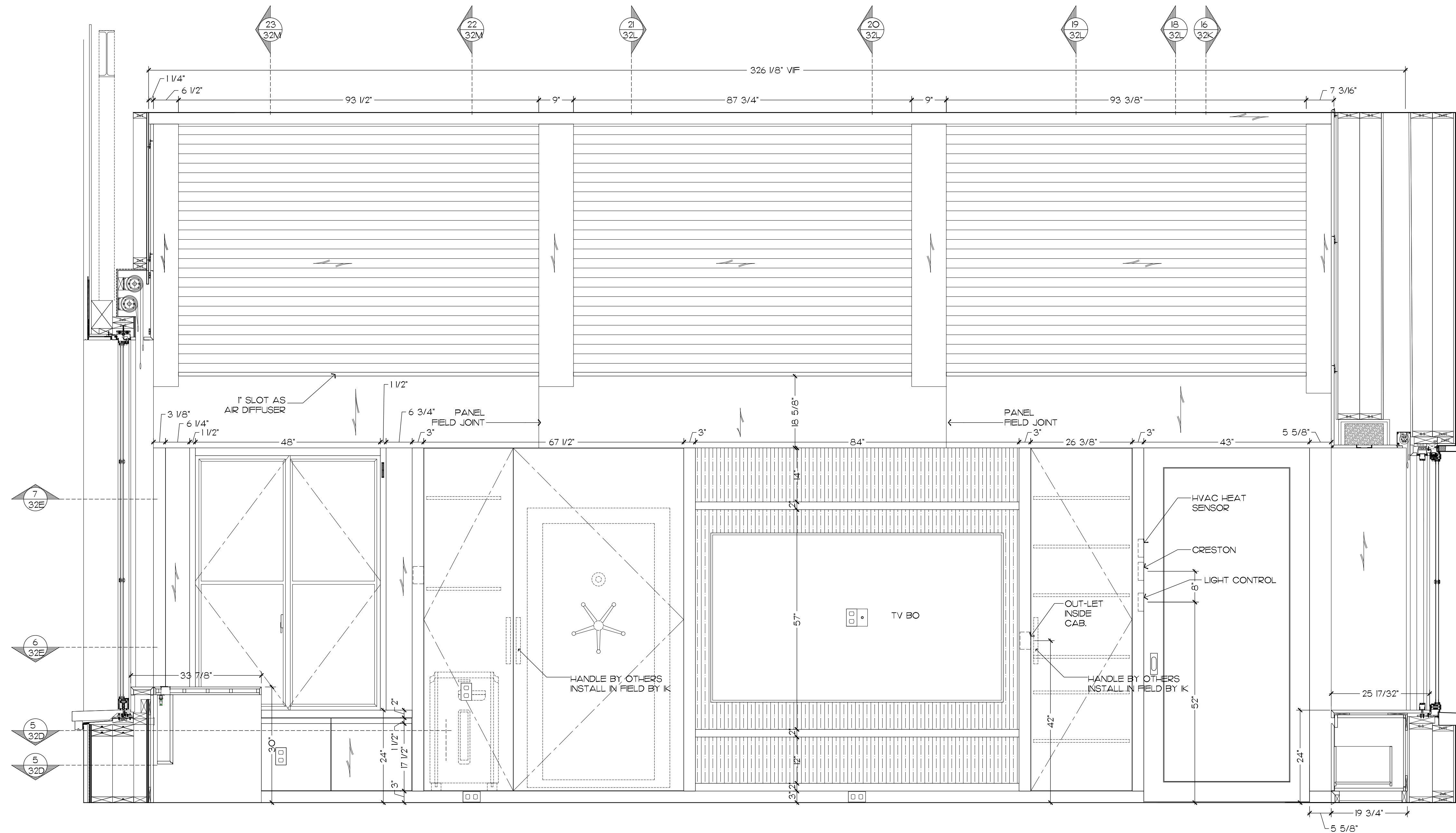
NOTES:

MATERIALS: - ALL EXPOSE SURFACE EXCLUDING THE CEILING TO BE RECONSTITUTED RIFT WHITE OAK PANELS (STAIN)
 - CEILING PANELS, RAFTERS AND BEAM TO BE 3/4" RECONSTITUTED RIFT WHITE OAK PANELS (STAIN)
 - 3/4" CERTIFIED PRE-FIN MAPLE INTERIORS
 - 1/2" CERTIFIED PRE-FIN MAPLE AT ALL CABINET BACKS
 - 1/2" PREMIUM MAPLE DOVETAIL DRAWER BOXES WITH 10% SHEEN

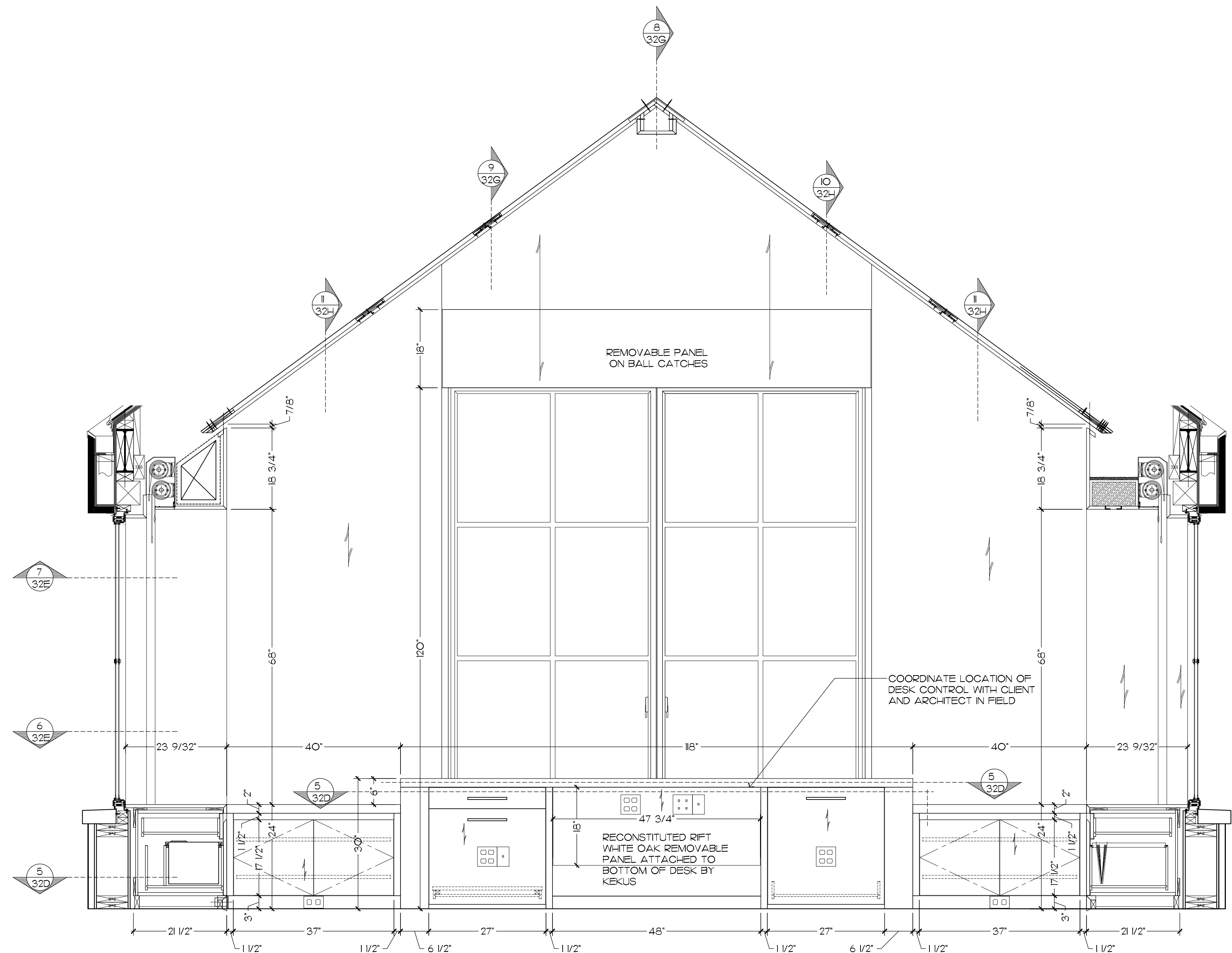
HARDWARE: -BLUM UNDERMOUNT SOFT CLOSE SLIDES
 -HINGES GRASS 120 OPEN SOFT CLOSE
 -HINGES GRASS 95 OPEN SOFT CLOSE FOR THICK DOOR APPLICATION
 -CABINET PULLS: SUPPLIED BY OTHERS
 -CLOSET RODS: HAFELE #801,42,600 ROUND TUBING 1 5/16", MATT NICKEL
 -CLOSET RODS END SUPPORT: HAFELE #803,56,600 , MATT NICKEL
 -SOSS INVISIBLE HINGE # 212
 -PULLS: PROVIDE BO, INSTALLED BY IK

FINISH: -PER ZONE SAMPLE

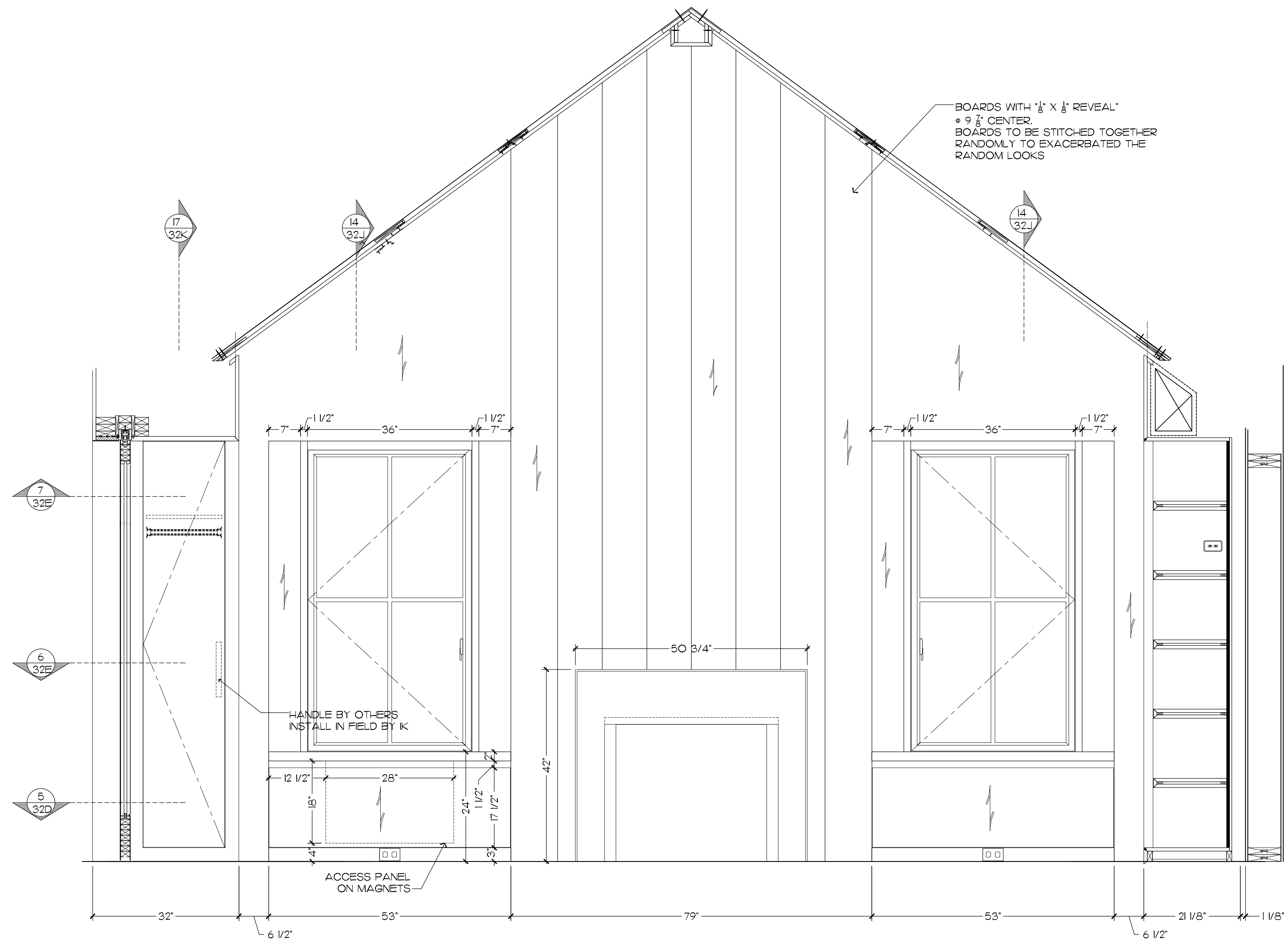




2 SOUTH ELEVATION • NORTH OFFICE ROOM #200
3/4" = 1"



3 EAST ELEVATION • NORTH OFFICE ROOM #200
3/4" = 1'



4 WEST ELEVATION • NORTH OFFICE ROOM #200
3/4" = 1'

REVISIONS:
REV# 6/28/18
REV2 9/4/18
REV3 9/19/18
REV4 9/29/18
REV5 10/31/18
TO S-I-O-P:

JOB NO:
0000

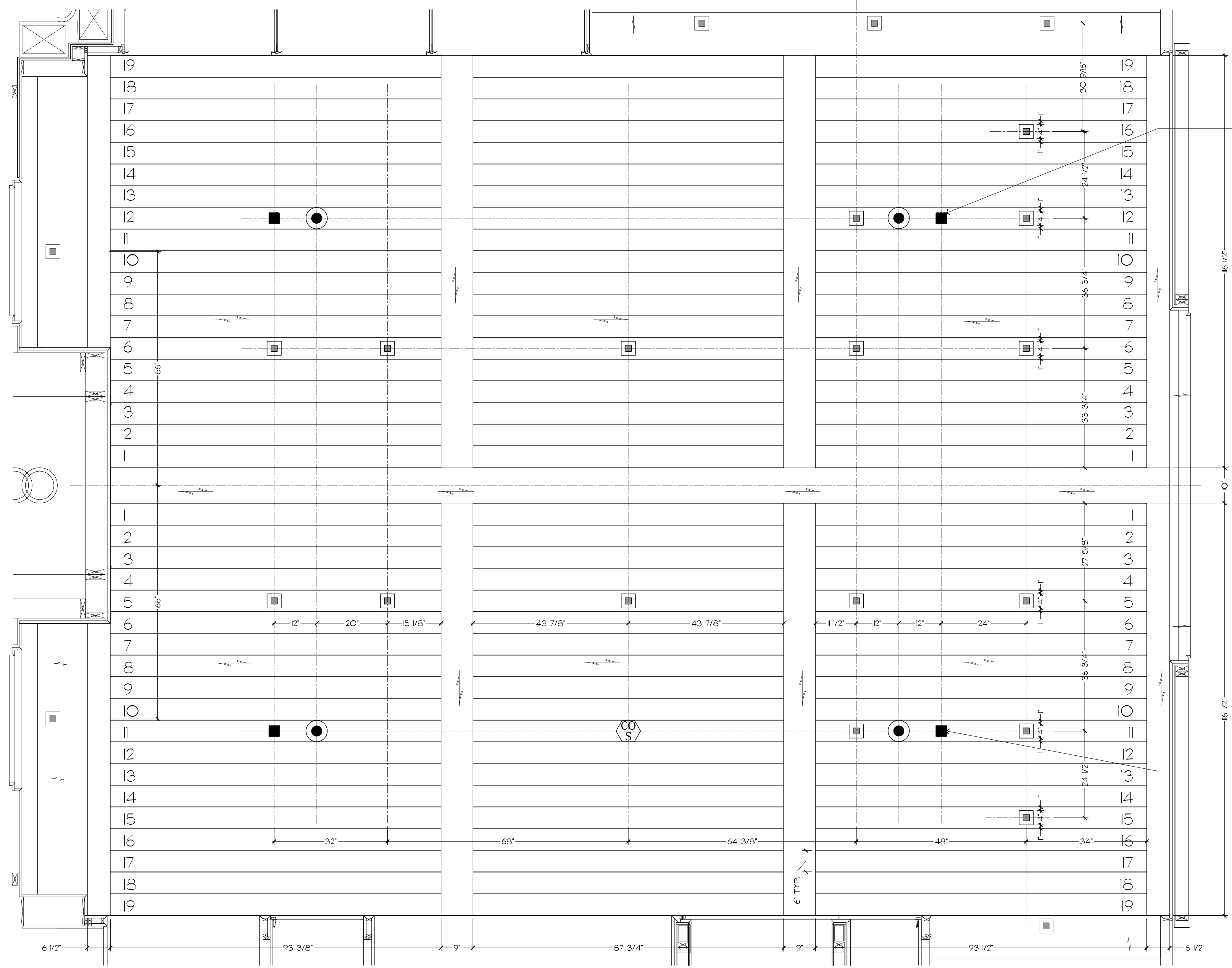
DRAWN BY:
HZ

DATE:
5/18/18

SCALE:
SEE DWG.

SHEET NO.

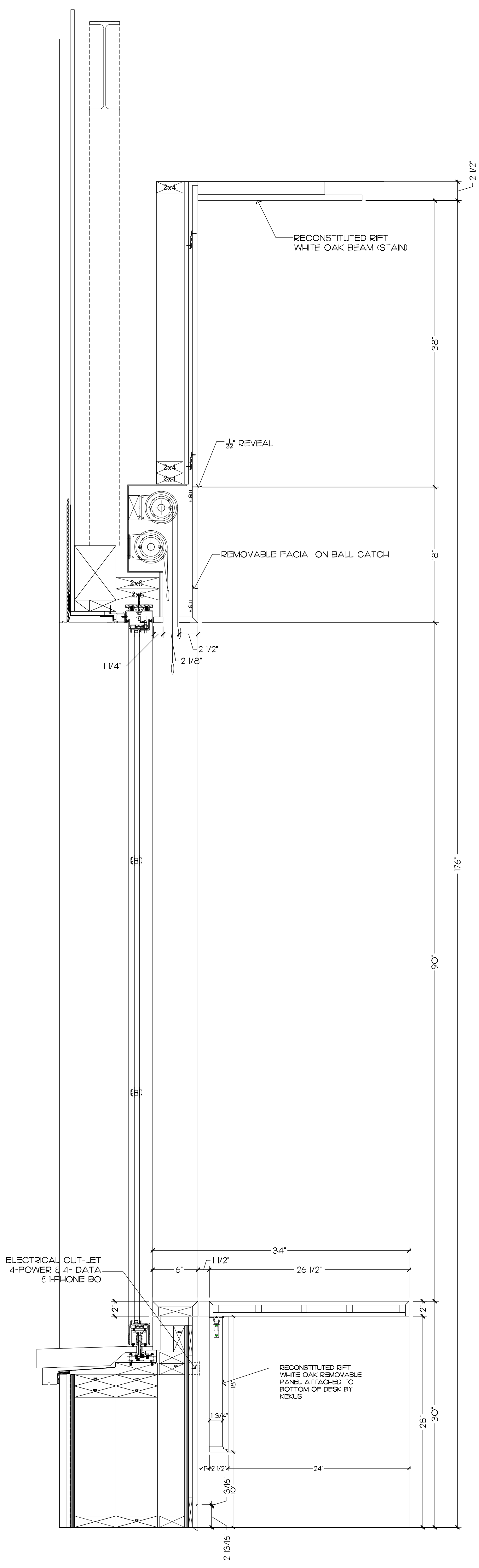
FOR FIXTURE LIGHTS LAY-OUT AT SOFFIT
SEE PAGE 32F



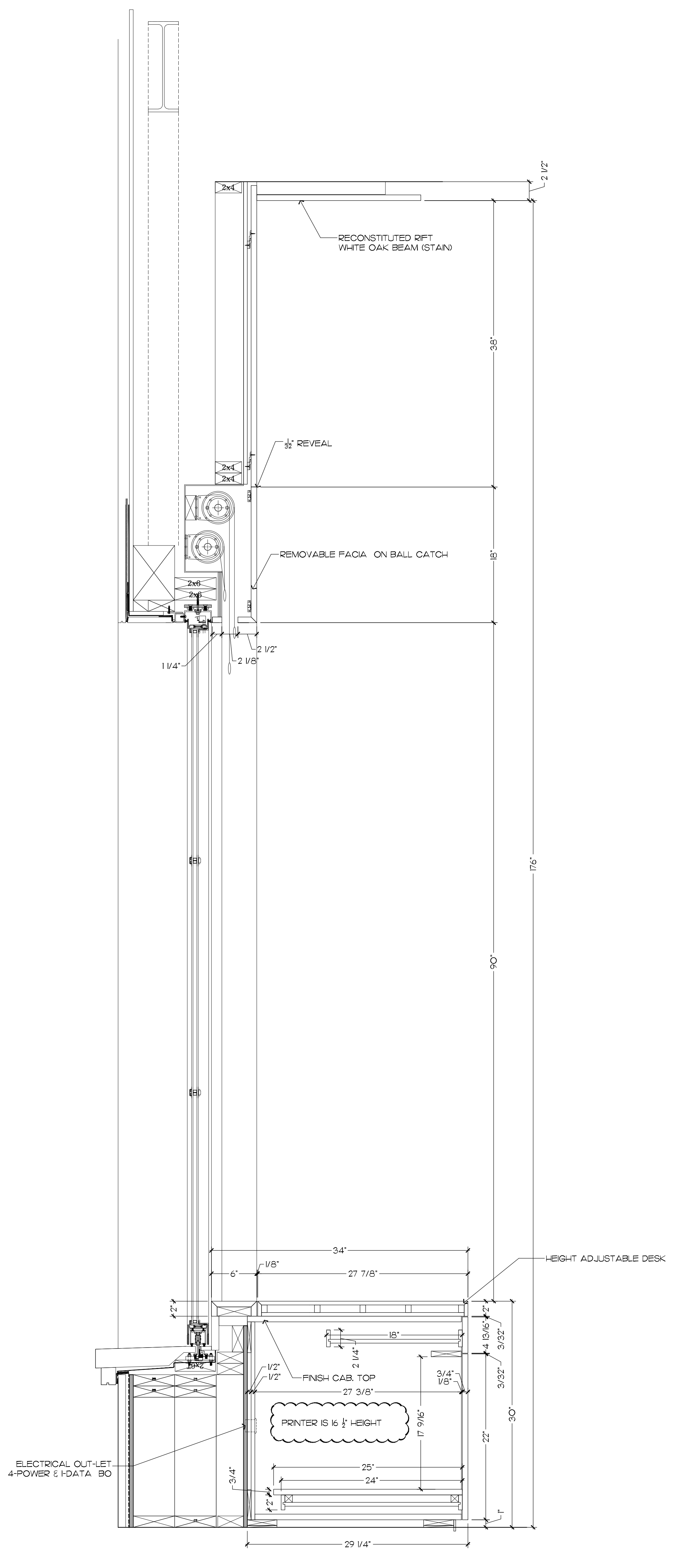
SPEAKERS TO BE SHIFTED OVER TO EAST
BY 1/2 JOIST BAY TO AVOID FRAMING.
VAC TO CONFIRM EXACT DIMENSIONS

SPEAKERS TO BE SHIFTED OVER TO EAST
BY 1/2 JOIST BAY TO AVOID FRAMING.
VAC TO CONFIRM EXACT DIMENSIONS

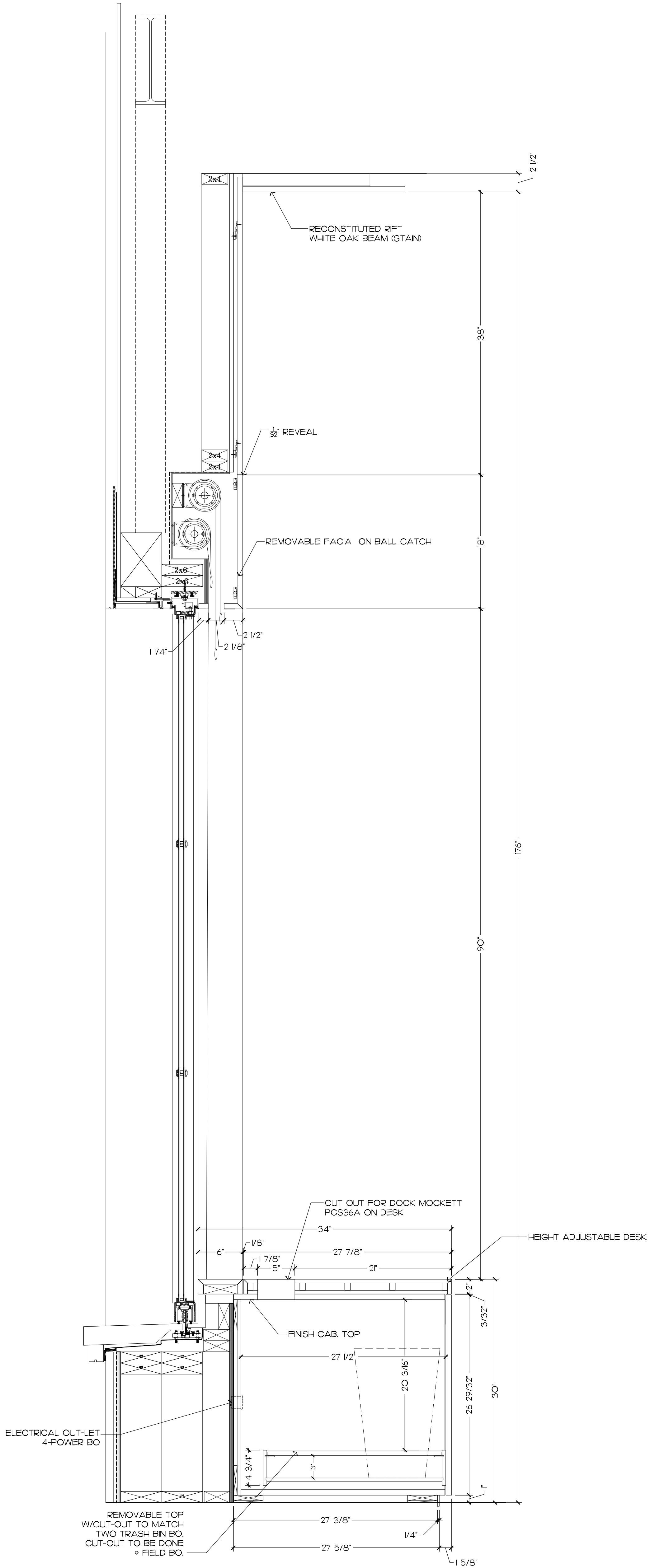
7 TRUE FLATTEN R.C.P. • NORTH OFFICE ROOM #200
3/4" = 1'



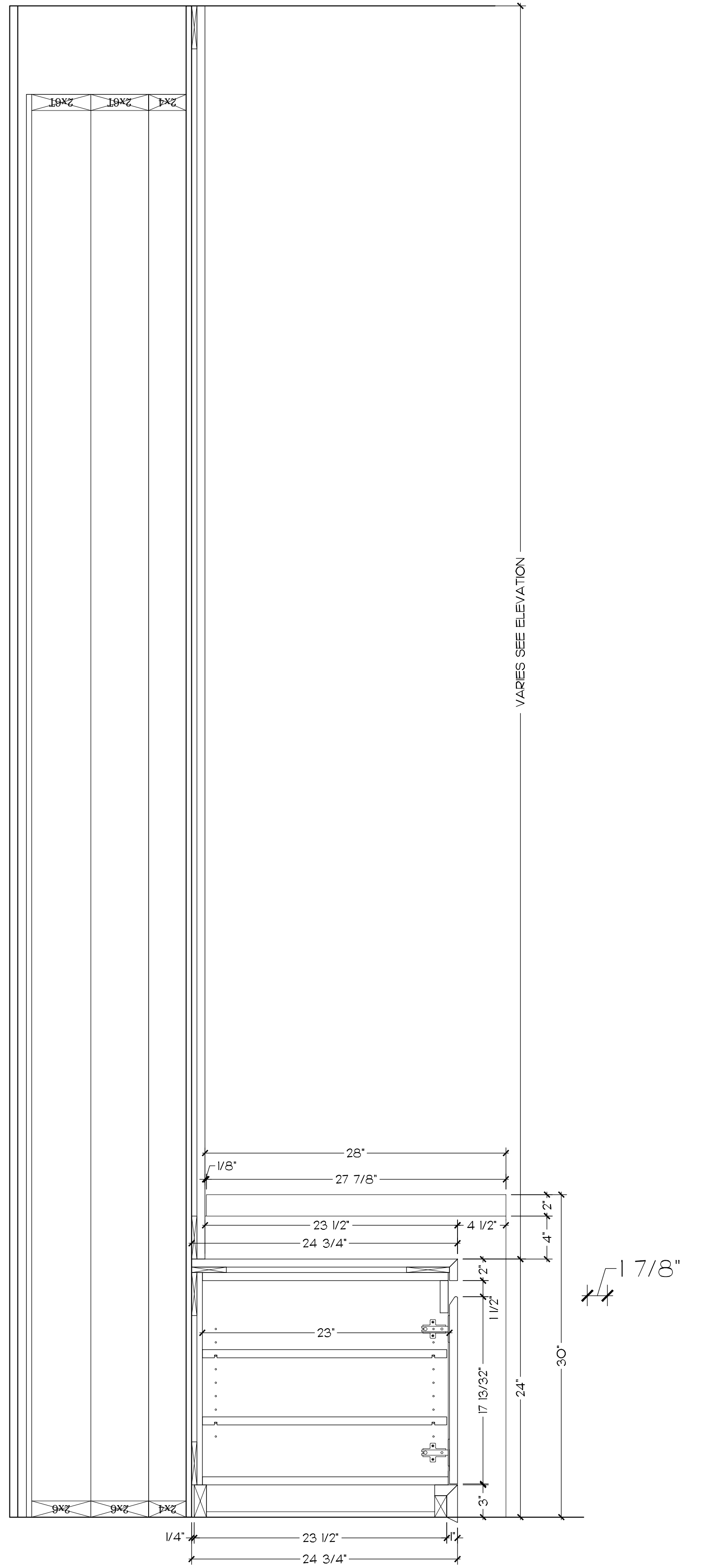
8 CROSS SECTION • NORTH OFFICE ROOM #200
1 1/2" = 1'-0"



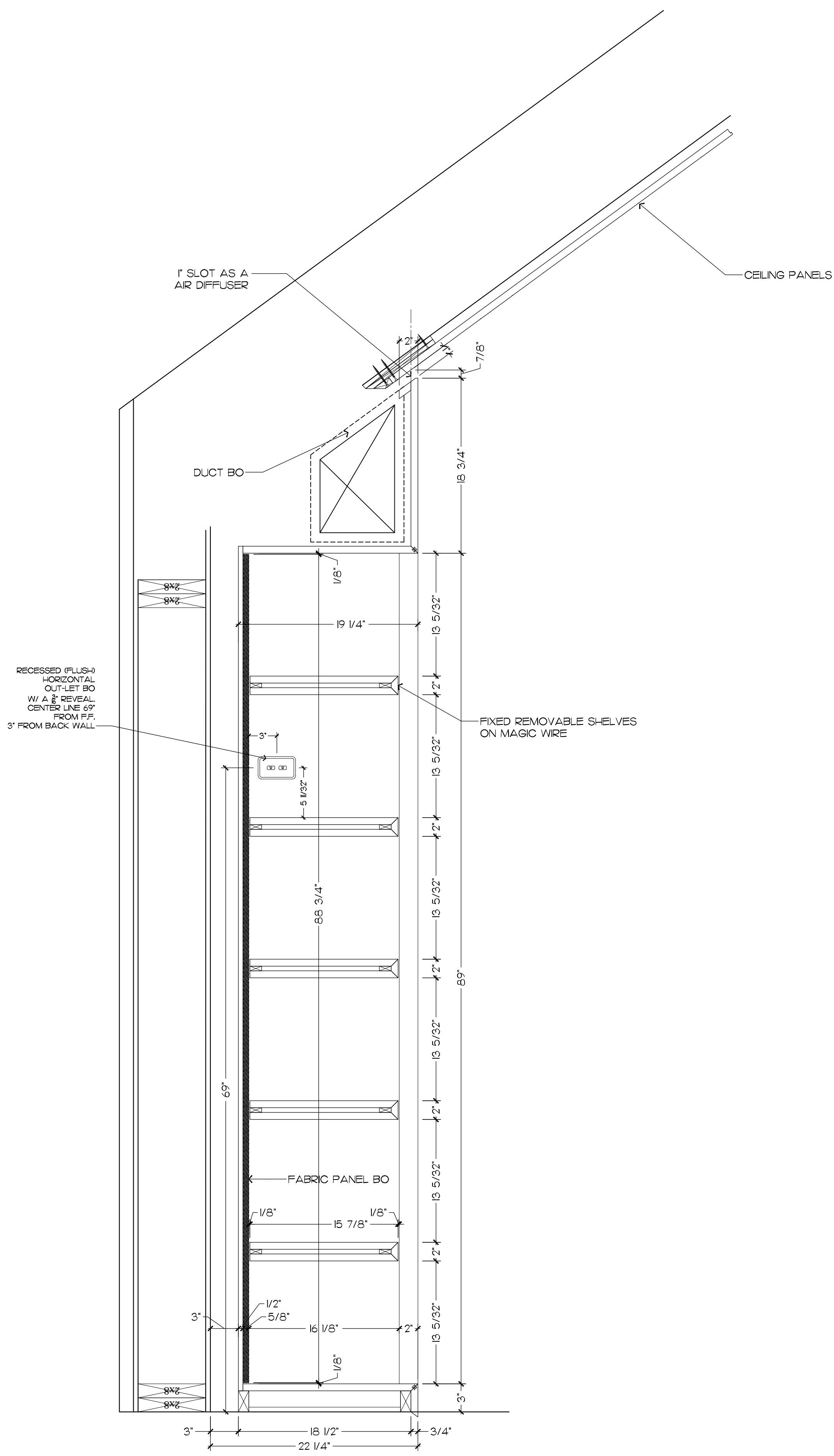
9 CROSS SECTION • NORTH OFFICE ROOM #200
1 1/2" = 1'-0"



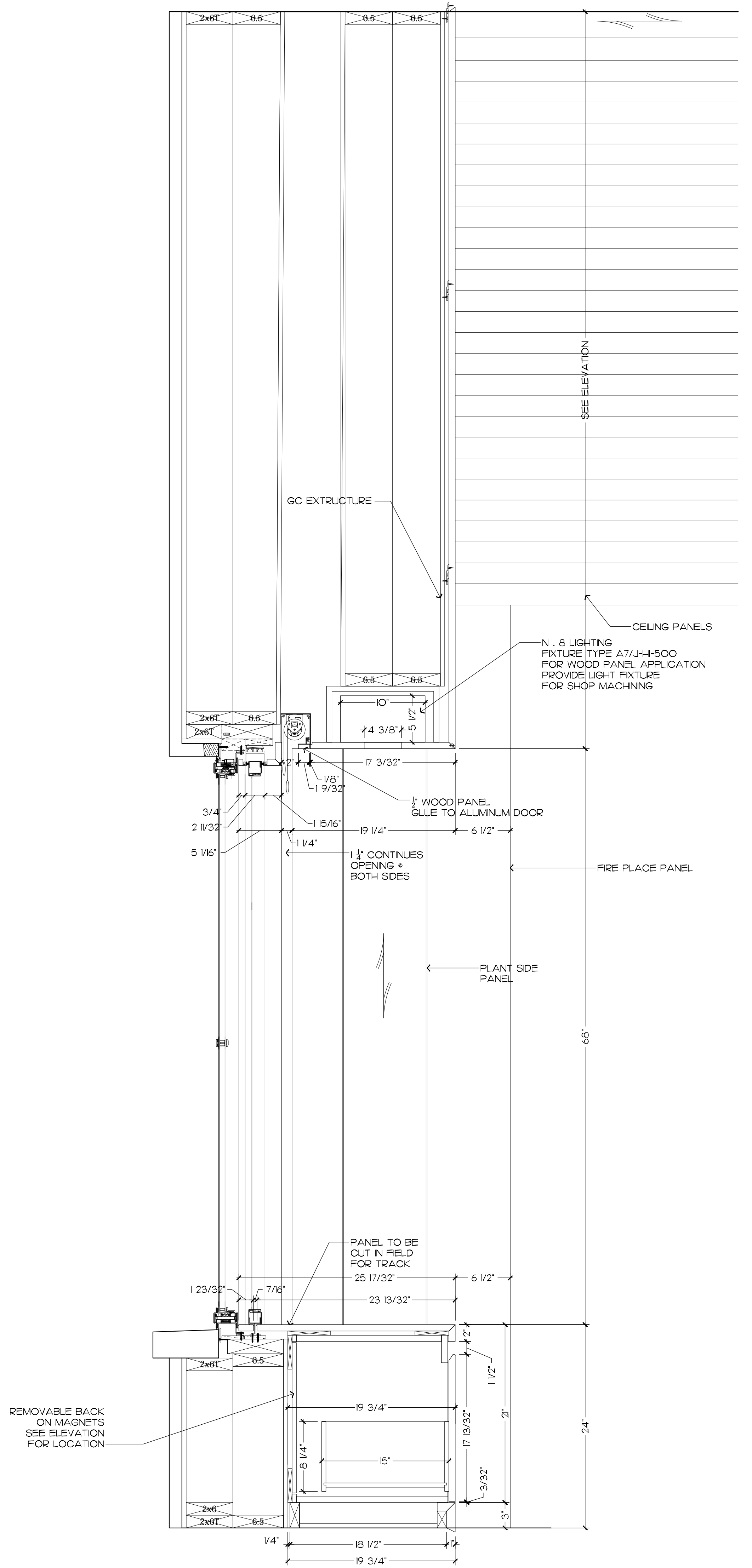
10 CROSS SECTION • NORTH OFFICE ROOM #200
1 1/2" = 1'-0"



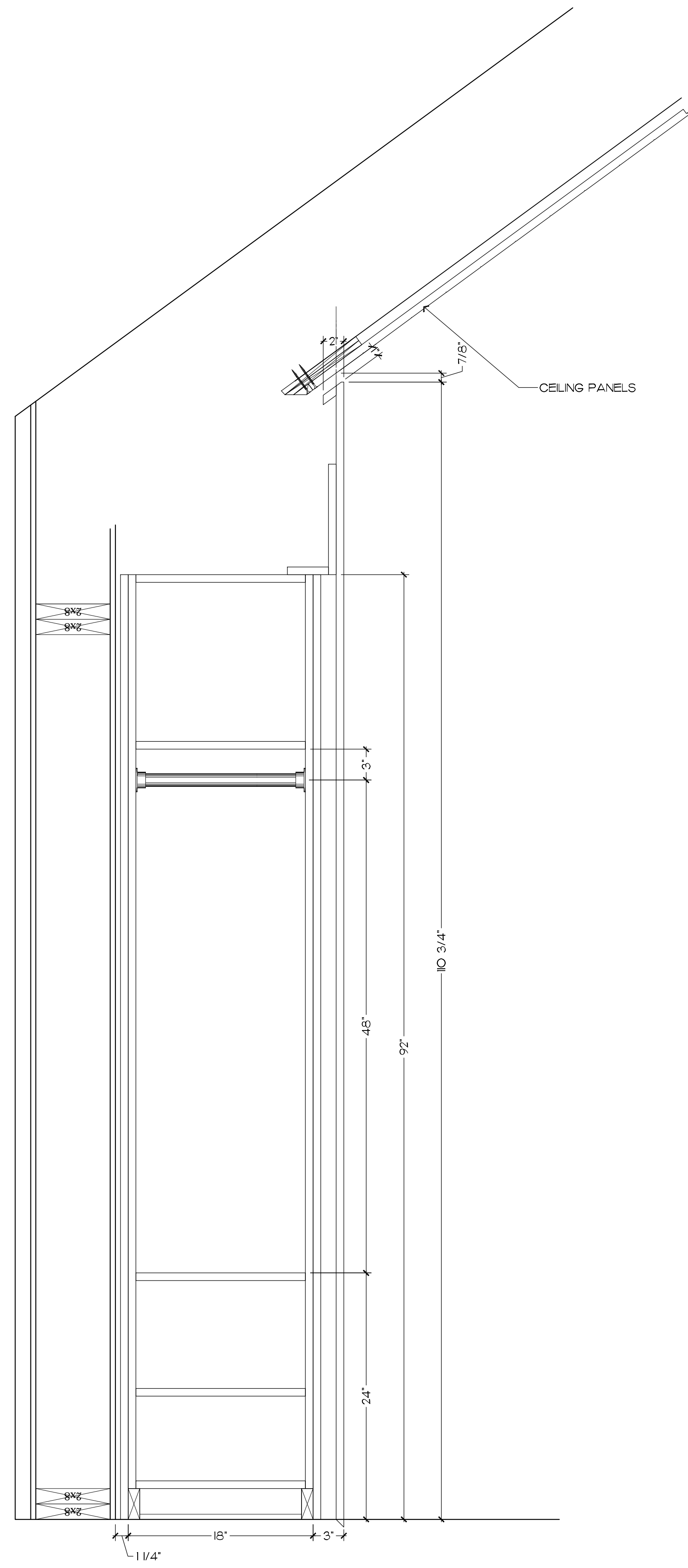
11 CROSS SECTION • NORTH OFFICE ROOM #200
1 1/2" = 1'-0"



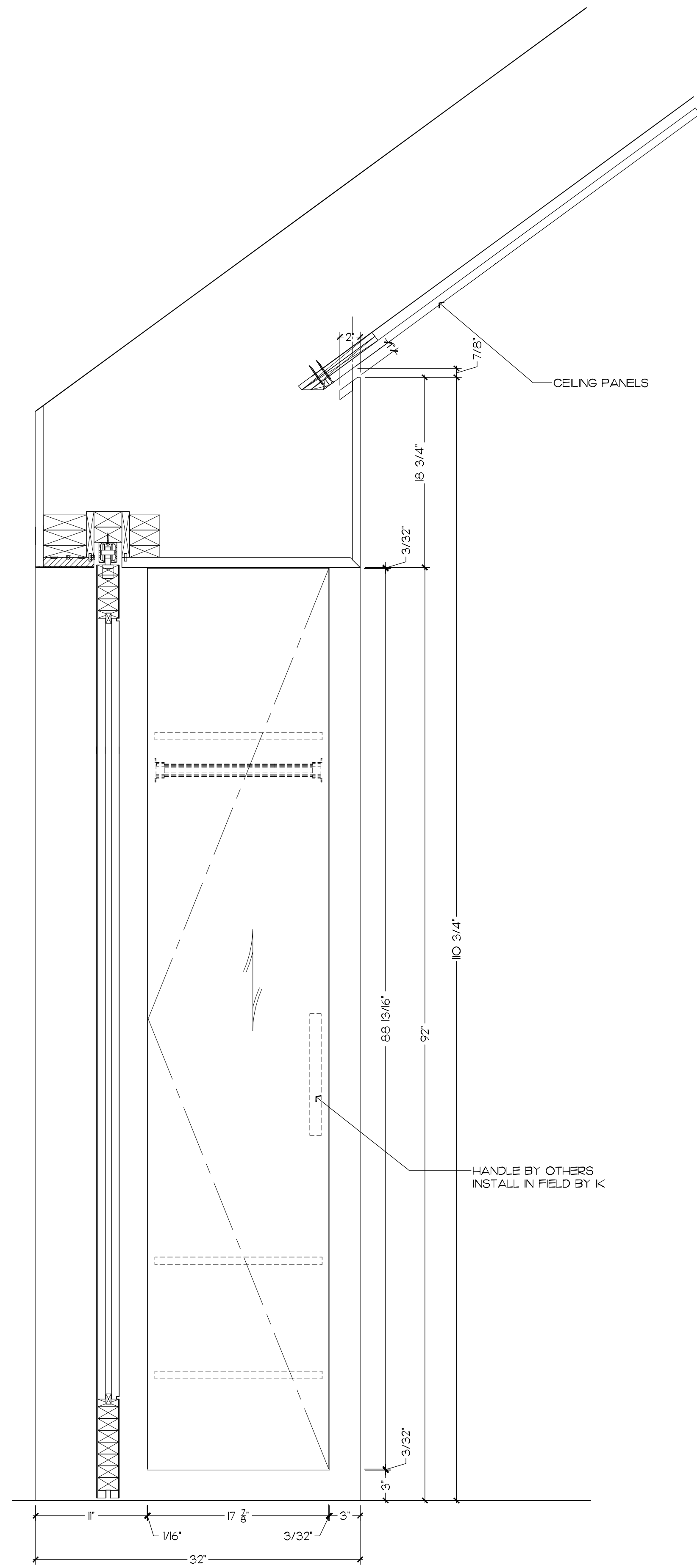
13 CROSS SECTION • NORTH OFFICE ROOM #200
1 1/2" = 1'-0"



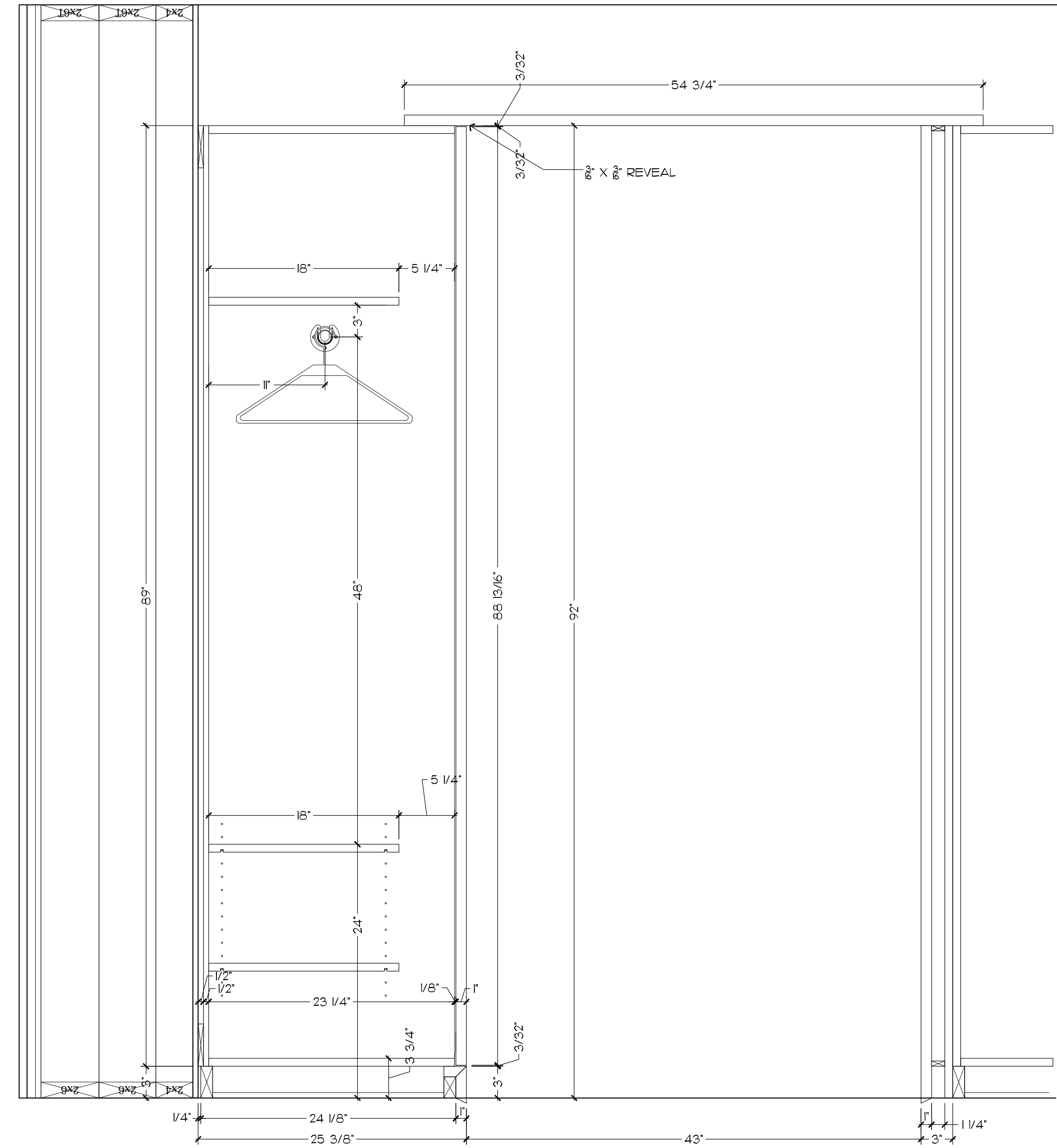
14 CROSS SECTION • NORTH OFFICE ROOM #200
1 1/2" = 1'-0"



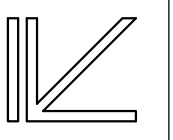
15 CROSS SECTION • NORTH OFFICE ROOM #200
1/2" = 1'-0"



16 CROSS SECTION • NORTH OFFICE ROOM #200
1/2" = 1'-0"



17 CROSS SECTION • NORTH OFFICE ROOM #200
1/2" = 1'-0"



IK DESIGN, INC.
21 DUFFY PLACE, SAN RAFAEL
CA, 94901
415.458.501

PROJECT:

142 BRITTON AVE.
NORTH OFFICE ROOM #200
PLAN AND ELEVATIONS

CLIENT:

VAN ACKER CONSTRUCTION

ARCHITECT:

ALDEN ARCHITECTURE

REVISIONS:
REV1 6/28/18
REV2 9/4/18
REV3 9/19/18
REV4 9/29/18
REV5 10/3/18
TO SHOP:

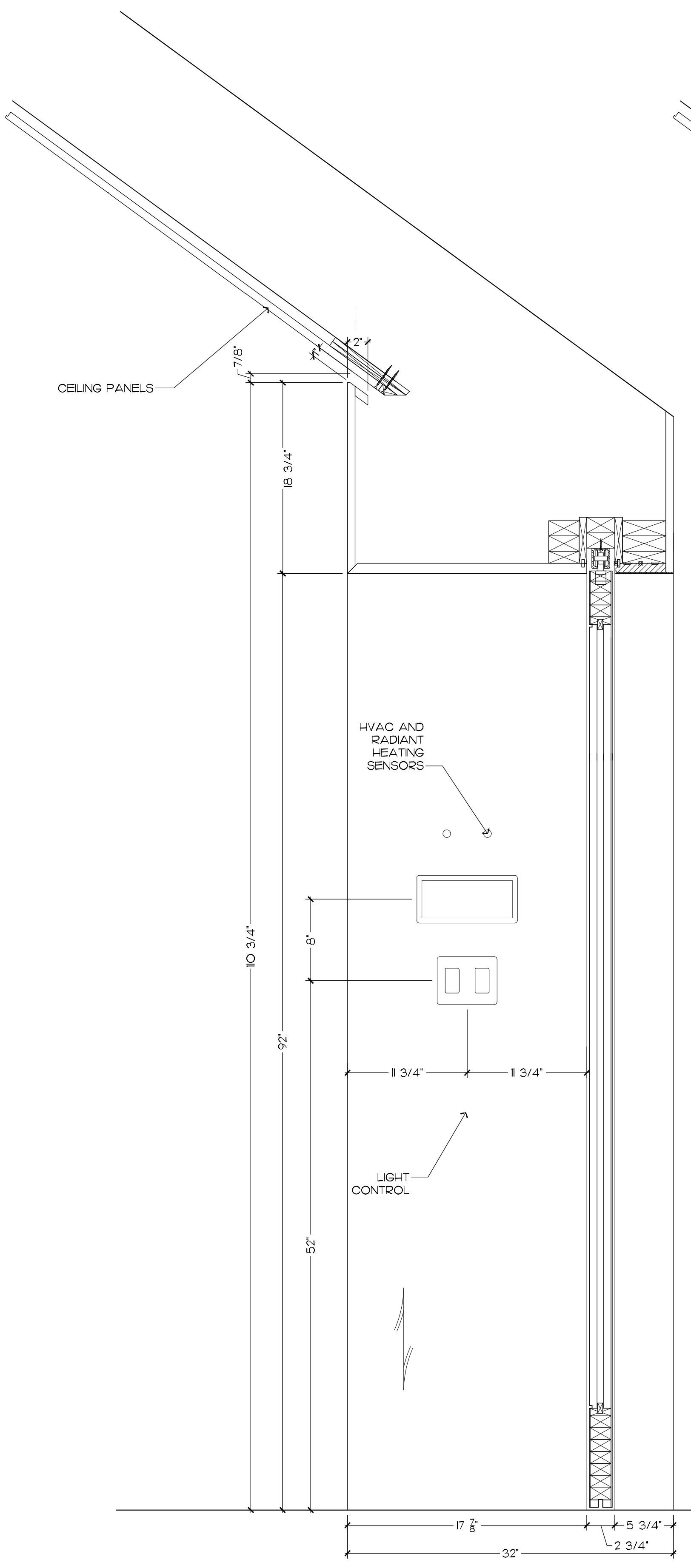
JOB NO:
0000

DRAWN BY:
HZ

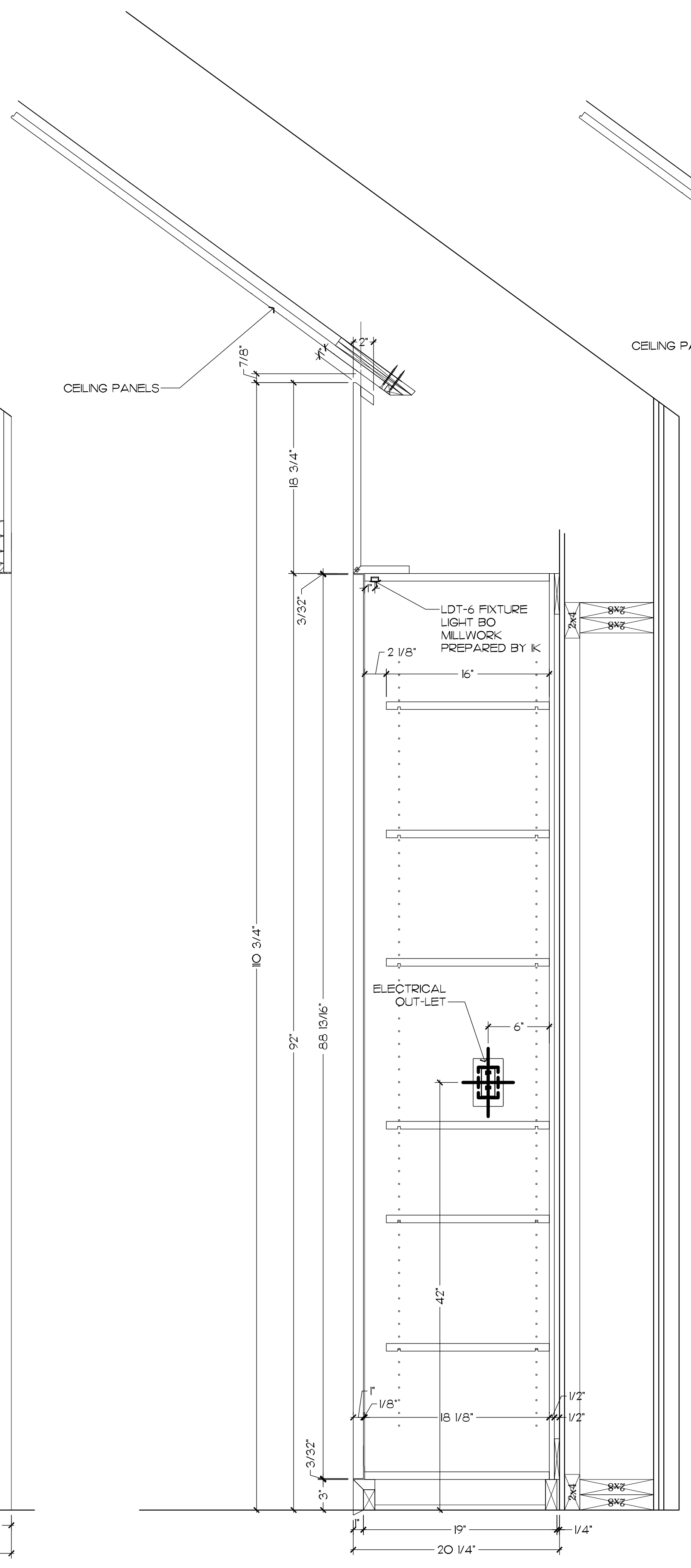
DATE:
5/18/18

SCALE:
SEE DWG.

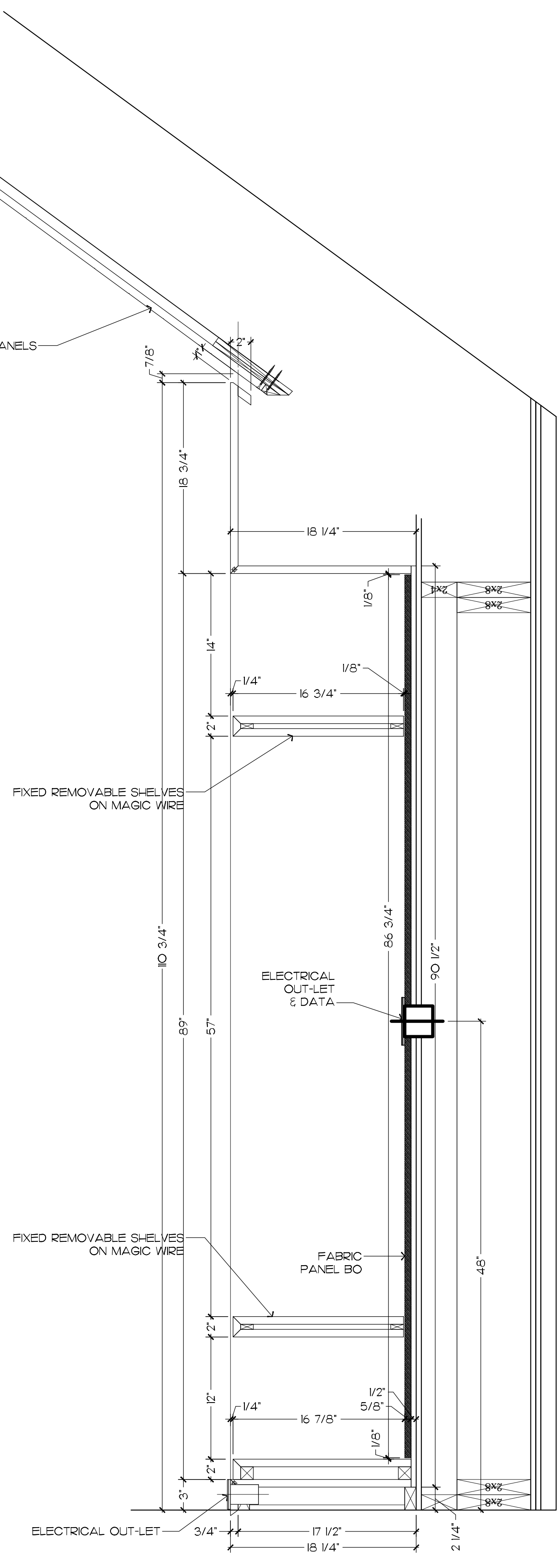
SHEET NO.
32K



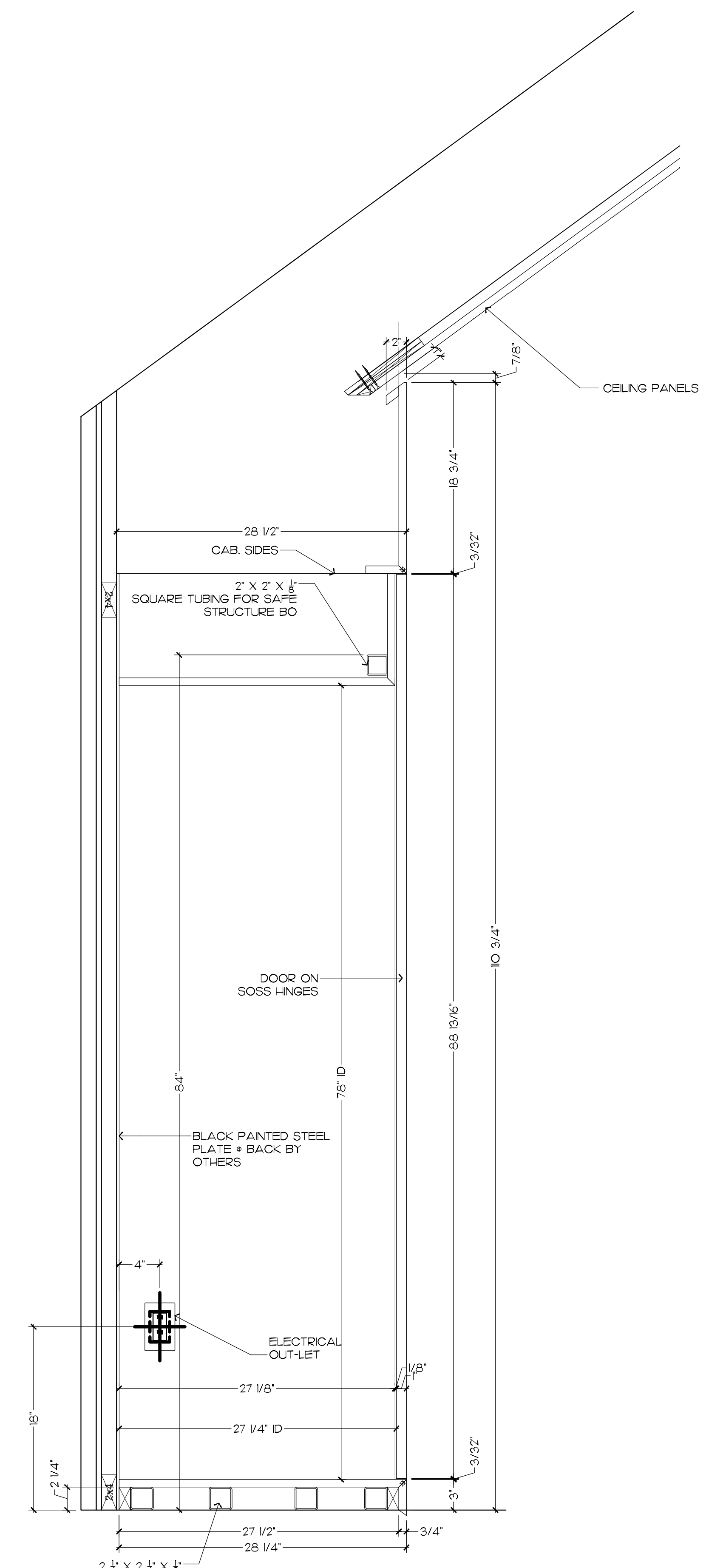
18 CROSS SECTION • NORTH OFFICE ROOM #200
1 1/2" = 1'-0"



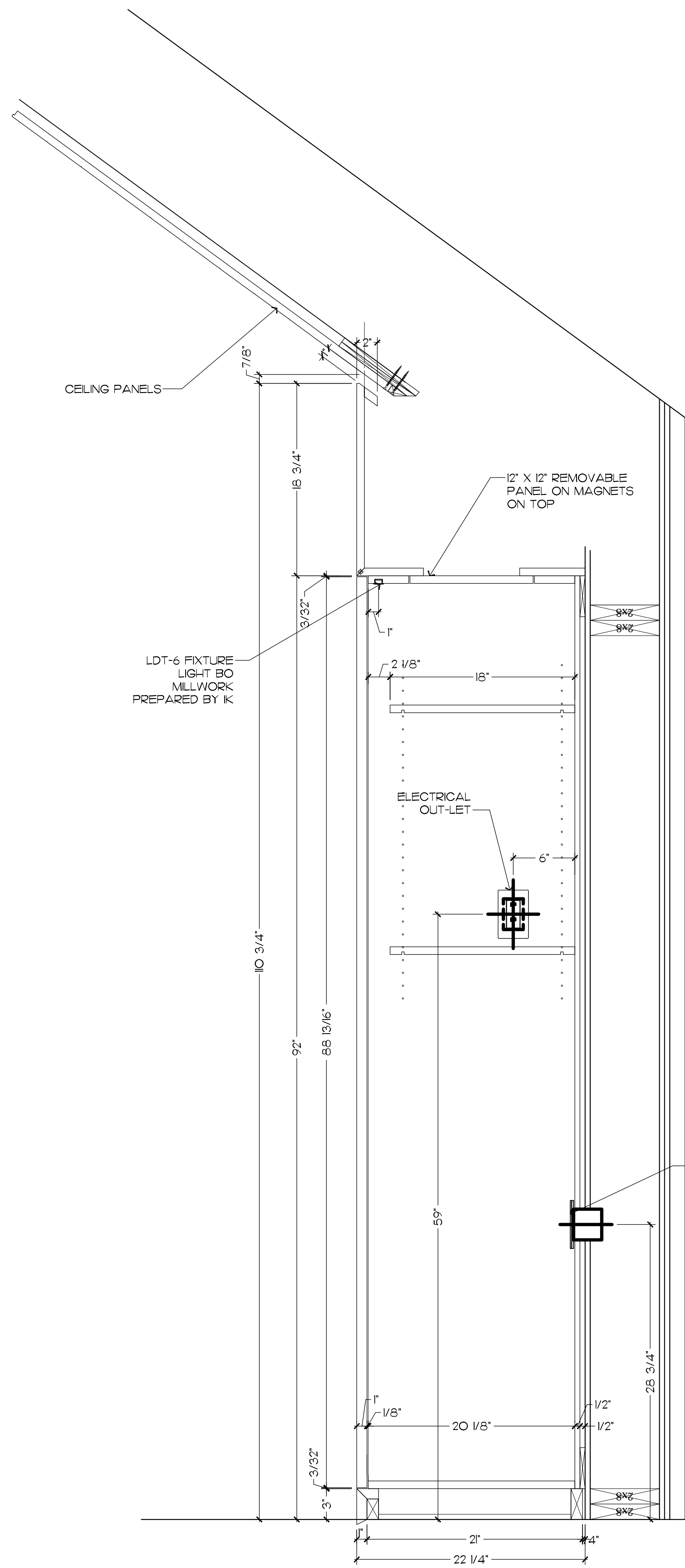
19 CROSS SECTION • NORTH OFFICE ROOM #200
1 1/2" = 1'-0"



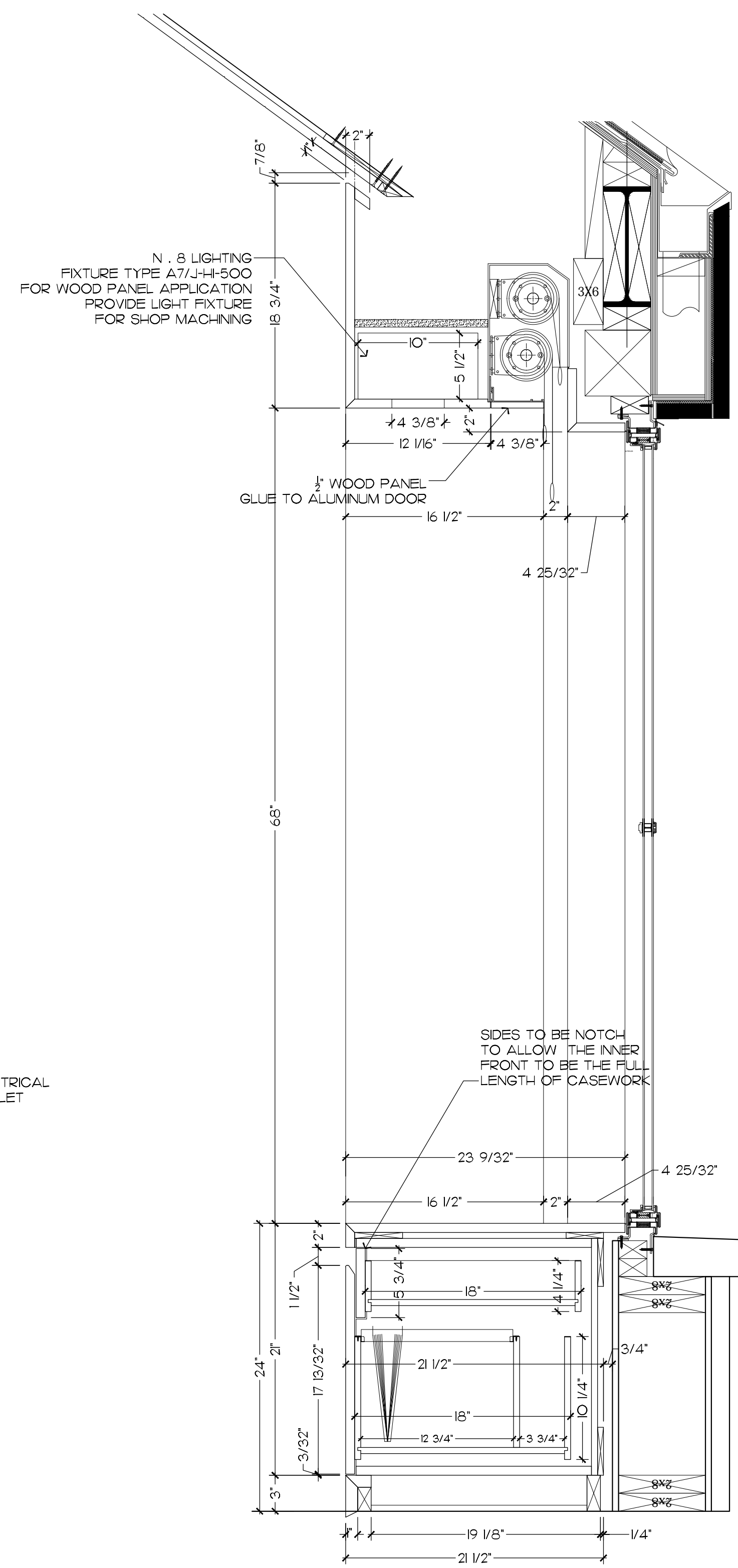
20 CROSS SECTION • NORTH OFFICE ROOM #200
1 1/2" = 1'-0"



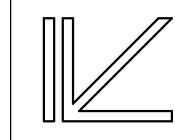
21 CROSS SECTION • NORTH OFFICE ROOM #200
1 1/2" = 1'-0"



22 CROSS SECTION • NORTH OFFICE ROOM #200
1/4" = 1'-0"



23 CROSS SECTION • NORTH OFFICE ROOM #200
1/4" = 1'-0"



IK DESIGN, INC.
21 DUFFY PLACE, SAN RAFAEL
CA, 94901
415/458-501

PROJECT:

142 BRITTON AVE.
NORTH OFFICE ROOM #200
PLAN AND ELEVATIONS

CLIENT:

VAN ACKER CONSTRUCTION

ARCHITECT:

ALDEN ARCHITECTURE

- REVISIONS:
- REV 1: 6/28/18
 - REV 2: 9/14/18
 - REV 3: 9/19/18
 - REV 4: 9/29/18
 - REV 5: 10/30/18
- TO SHOP:

JOB NO:
0000

DRAWN BY:
HZ

DATE:
5/18/18

SCALE:
SEE DWG.

SHEET NO.

32M