



Stair Tread Returns and Installation with P-System



“ The Lamello Zeta P-2 has truly revolutionized our stair installation methods, offering a game-changing solution for stair riser and tread installations. One of its standout features is the ability to achieve blind fastening, replacing traditional face nails and providing a truly seamless finish with exceptional detail. ”

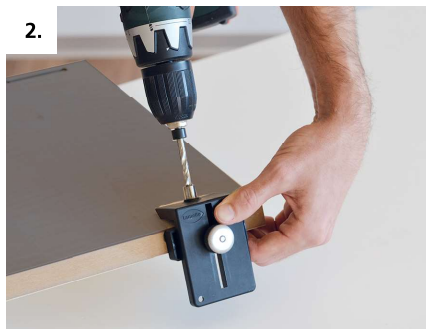
Eric Haas, Ayars Complete Home Improvements, Mickleton, NJ



How it works:



1. Make 14mm P-System slot in edge of tread and bullnose return



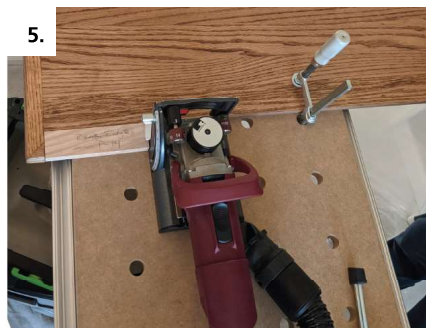
2. Drill 6mm access hole in bottom of tread for male Clamex connector, using drill jig



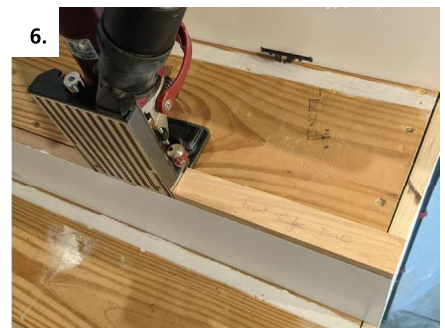
3. Glue and assemble nosing to tread with Clamex P-14 by engaging cam lock



4. Create stop block to reference P-System slot in riser



5. Use same stop block against bullnose return ear for slot on back edge of tread



6. Create reference block for slot location on top edge of riser



7. Use same reference block for slot location on underside of tread



8. Install Tenso connectors and apply PL adhesive to rough framing and underside of tread



9. Tread is glued securely with no visible fasteners

Lamello

P-System tools, connectors & accessories

For in-depth Lamello how-to videos, visit our Lamello Lessons YouTube channel



Zeta P2 biscuit joiner	Art. No.
In Systainer, with carbide cutter and drill jig	101402S
In Systainer, with diamond cutter and drill jig	101402DS



Zeta P2 cordless biscuit joiner, DP (diamond)	Art. No.
In Systainer, incl. 2 batteries and charger	101801SD
In Systainer, without batteries, without charger	101800SD



P-System connector assortment professional	Art. No.
Includes: 80 pairs Clamex P-14, 80 pairs Tenso P-14 incl. clip, 60 pairs Clamex P14/10 Medius, 20 pieces Bisco P-14, Tenso P-14/10 preload tool, Systainer II T-Loc incl. compartment dividers	145314



P-System connector assortment basic	Art. No.
Includes: 120 pairs Clamex P-14, 30 pairs Clamex P-14/10 Flexus, 30 pairs Clamex P-10, 80 pairs Tenso P-14 incl. clip, 30 pairs Tenso P-10 incl. clip, 20 pieces Bisco P-14, 20 pieces Bisco P-10, 80 pairs Divario P-18, Divario installation tool/drill/marking gauge, Clamex, P installation tool, Tenso P-14/10 preload tool, Systainer T-loc	145312



Divario P-18 Starter Set	Art. No.
In Systainer3, includes: Divario P-18, 80 pairs, drill, metal marking jig and installation tool	145551



Clamex P-14	Art. No.
80 pairs	145334
300 pairs	145346
1000 pairs	145356



Clamex P-14/10 Medius	Art. No.
80 pairs	145370
300 pairs	145371



Clamex P-10	Art. No.
80 pairs	145372
300 pairs	145373
1000 pairs	145374



Clamex P-14/10 Flexus	Art. No.
80 pairs	145315
300 pairs	145316
1000 pairs	145317



Bisco P-14	Art. No.
80 pieces	145301
300 pieces	145302
1000 pieces	145303



Bisco P-10	Art. No.
80 pieces	145304
300 pieces	145305



Divario P-18	Art. No.
80 pairs	145550
300 pairs	145560
1000 pairs	145570



Tenso P-14	Art. No.
80 pairs	145415
80 pairs, with preload clip	145415S
300 pairs	145425
1000 pairs	145435



Tenso P-14 preload clip	Art. No.
300 pieces	145426
1000 pieces	145436



Tenso P-10	Art. No.
80 pairs, with preload clip	145418
300 pairs, with preload clip	145428
1000 pairs, with preload clip	145438

Your distribution partner: