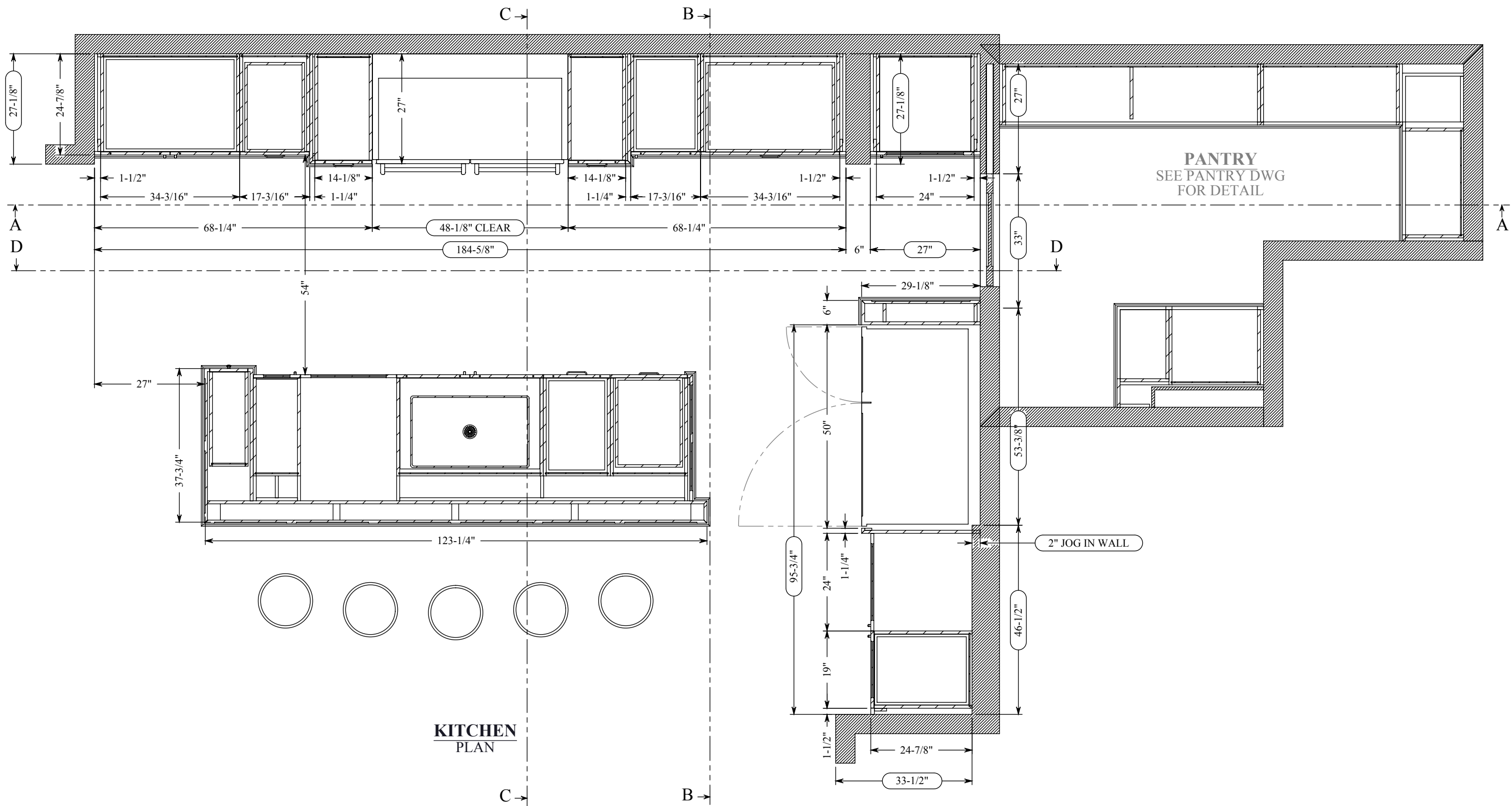


KITCHEN
PERSPECTIVE VIEW



KITCHEN
PERSPECTIVE VIEW

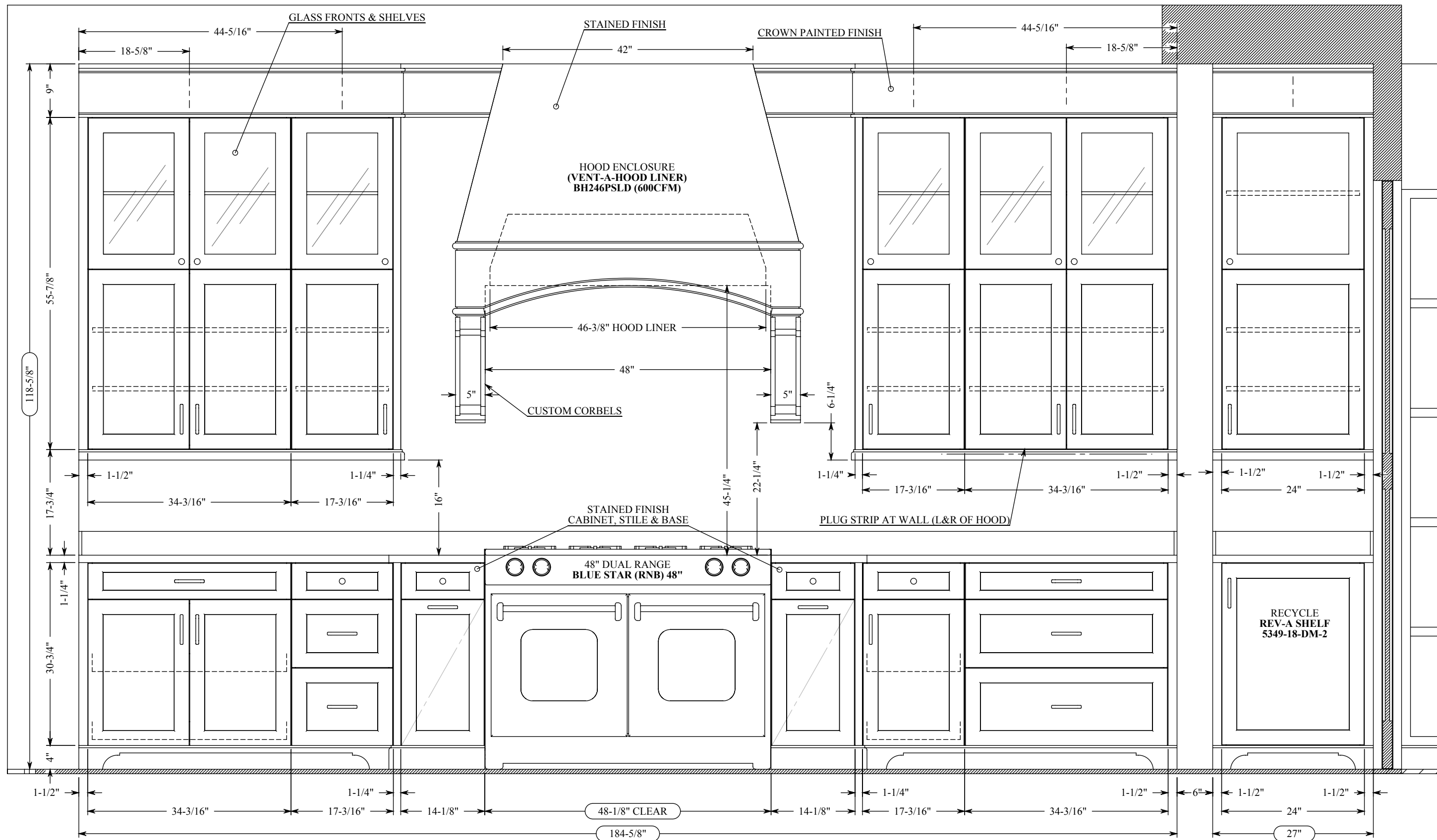


KITCHEN PLAN

SCALE: 1/2" = 1'

NOTE: ALL CABINETS PAINTED FINISH, EXCEPT AS NOTED

JOB: GUYETTE RESIDENCE	FACE MATERIAL: PAINTGRADE/SAPELE	REVISION: B	PAGE # 3
ROOM: KITCHEN	INTERIOR MATERIAL: MAPLE PLY CLEAR FINISH	FINISH: PAINT/STAIN (AS NOTED)	Date: 1/21/2014

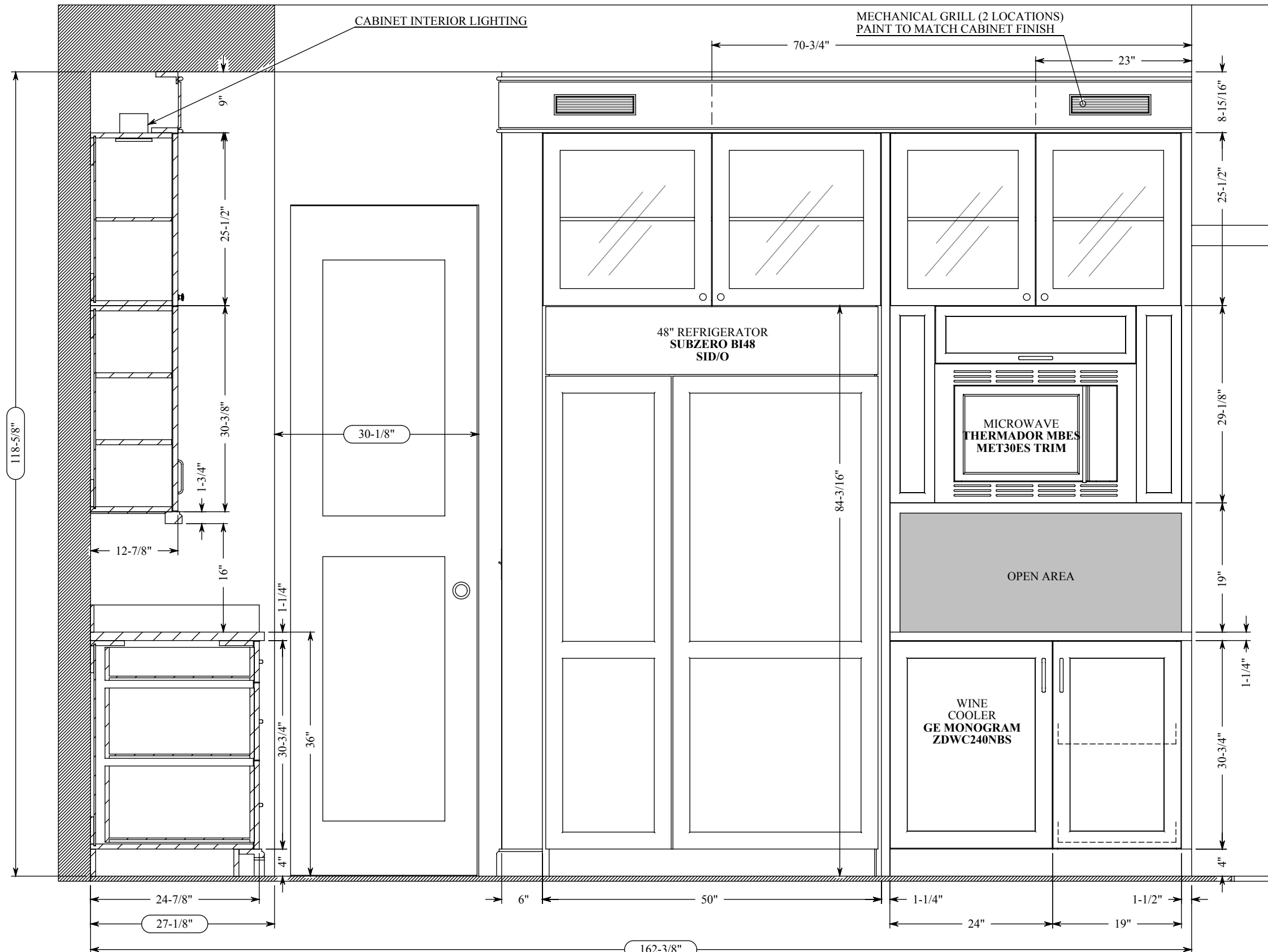


NORTH ELEVATION
SECTION A-A

SCALE: 3/4" = 1'

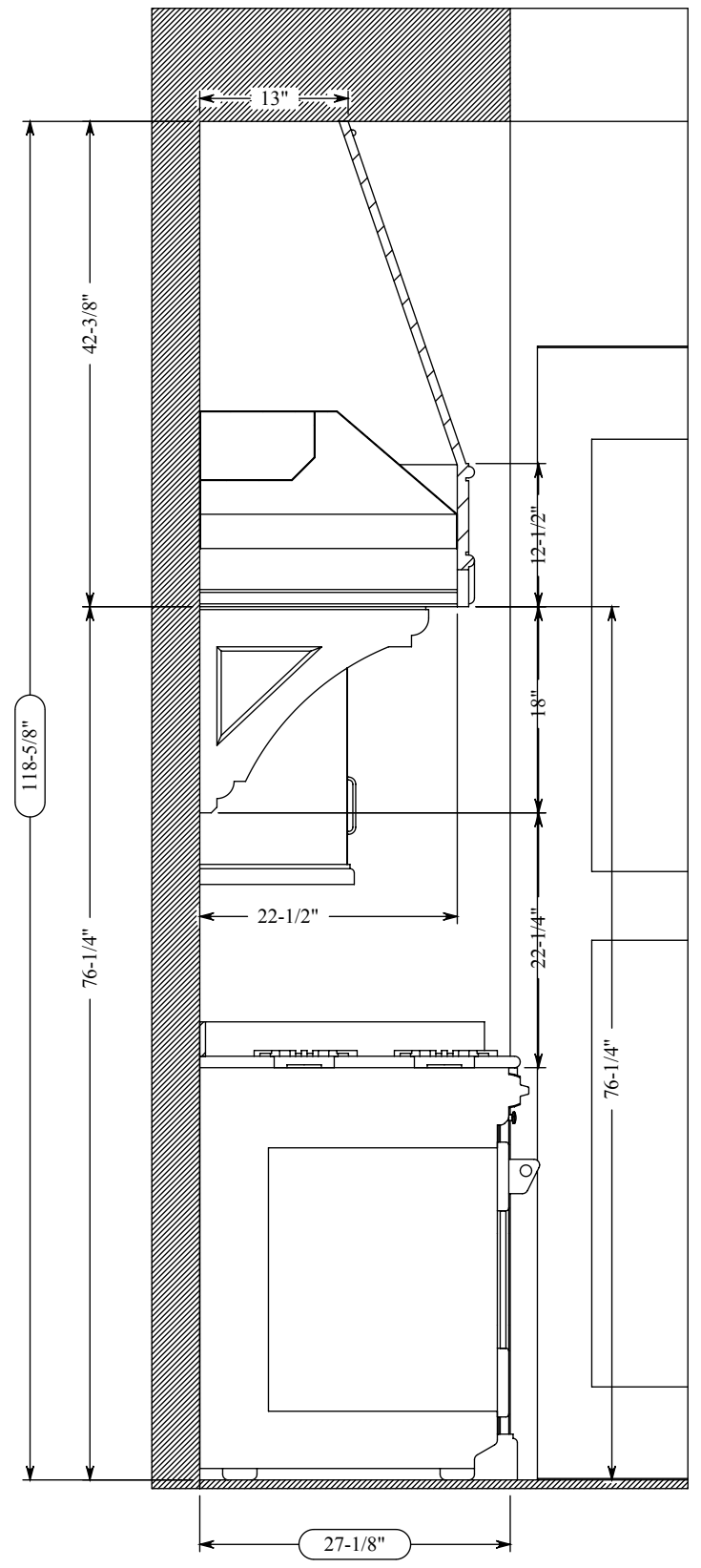
NOTE: ALL CABINETS PAINTED FINISH, EXCEPT AS NOTED

JOB: GUYETTE RESIDENCE	FACE MATERIAL: PAINTGRADE/SAPELE	REVISION: B	PAGE # 4
ROOM: KITCHEN	INTERIOR MATERIAL: MAPLE PLY CLEAR FINISH	FINISH: PAINT/STAIN (AS NOTED)	Date: 1/21/2014



EAST ELEVATION
SECTION B-B

SCALE: 3/4" = 1'



EAST ELEVATION @ HOOD
SECTION C-C

NOTE: ALL CABINETS PAINTED FINISH, EXCEPT AS NOTED

JOB: GUYETTE RESIDENCE

FACE MATERIAL: PAINTGRADE/SAPELE

REVISION: B

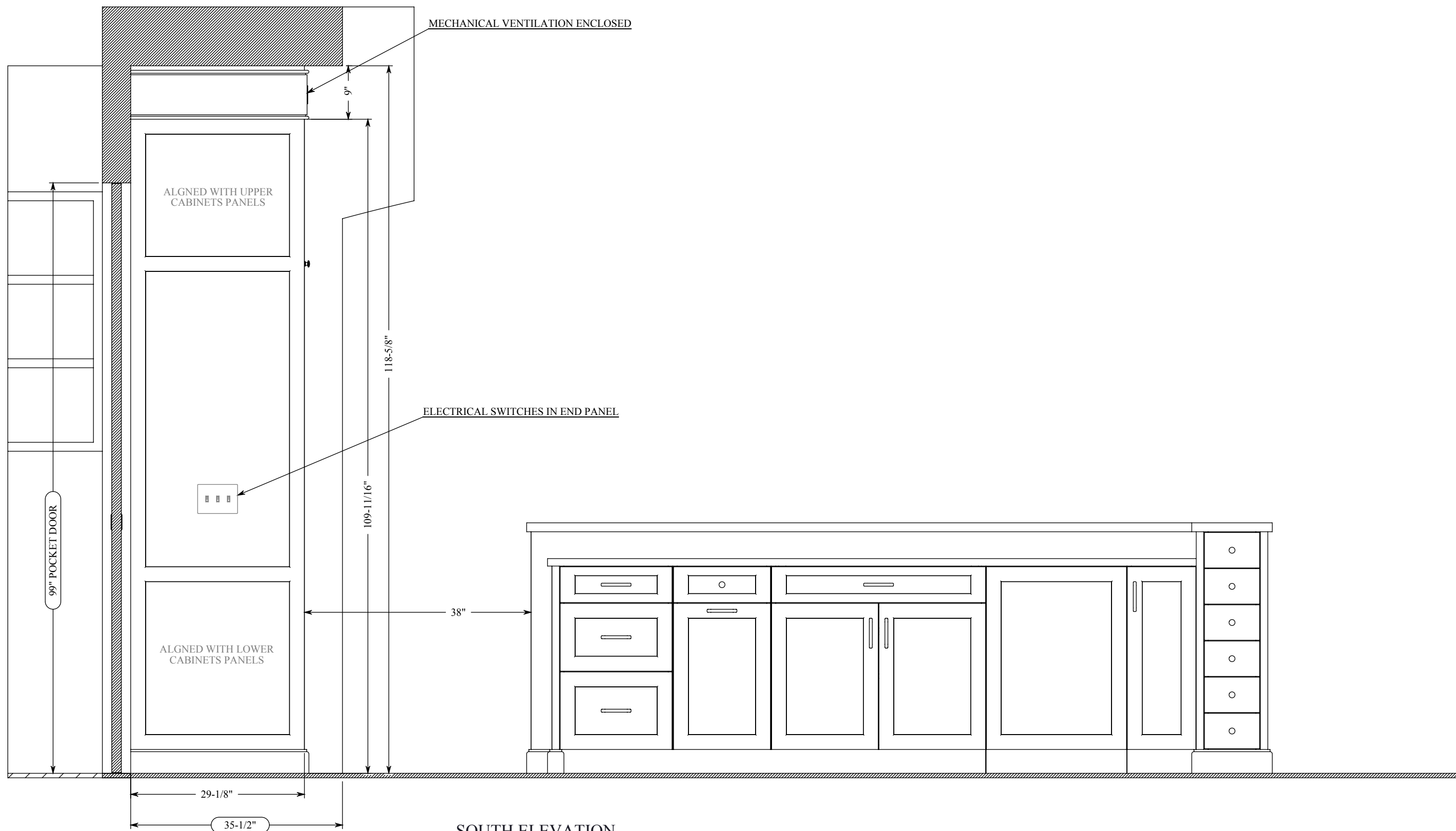
PAGE # 5

ROOM: KITCHEN

INTERIOR MATERIAL: MAPLE PLY CLEAR FINISH

FINISH: PAINT/STAIN (AS NOTED)

Date: 1/21/2014



SOUTH ELEVATION SECTION D-D SCALE: 3/4" = 1'

NOTE: ALL CABINETS PAINTED FINISH, EXCEPT AS NOTED

JOB: GUYETTE RESIDENCE	FACE MATERIAL: PAINTGRADE/SAPELE	REVISION: B	PAGE # 6
ROOM: KITCHEN	INTERIOR MATERIAL: MAPLE PLY CLEAR FINISH	FINISH: PAINT/STAIN (AS NOTED)	Date: 1/21/2014