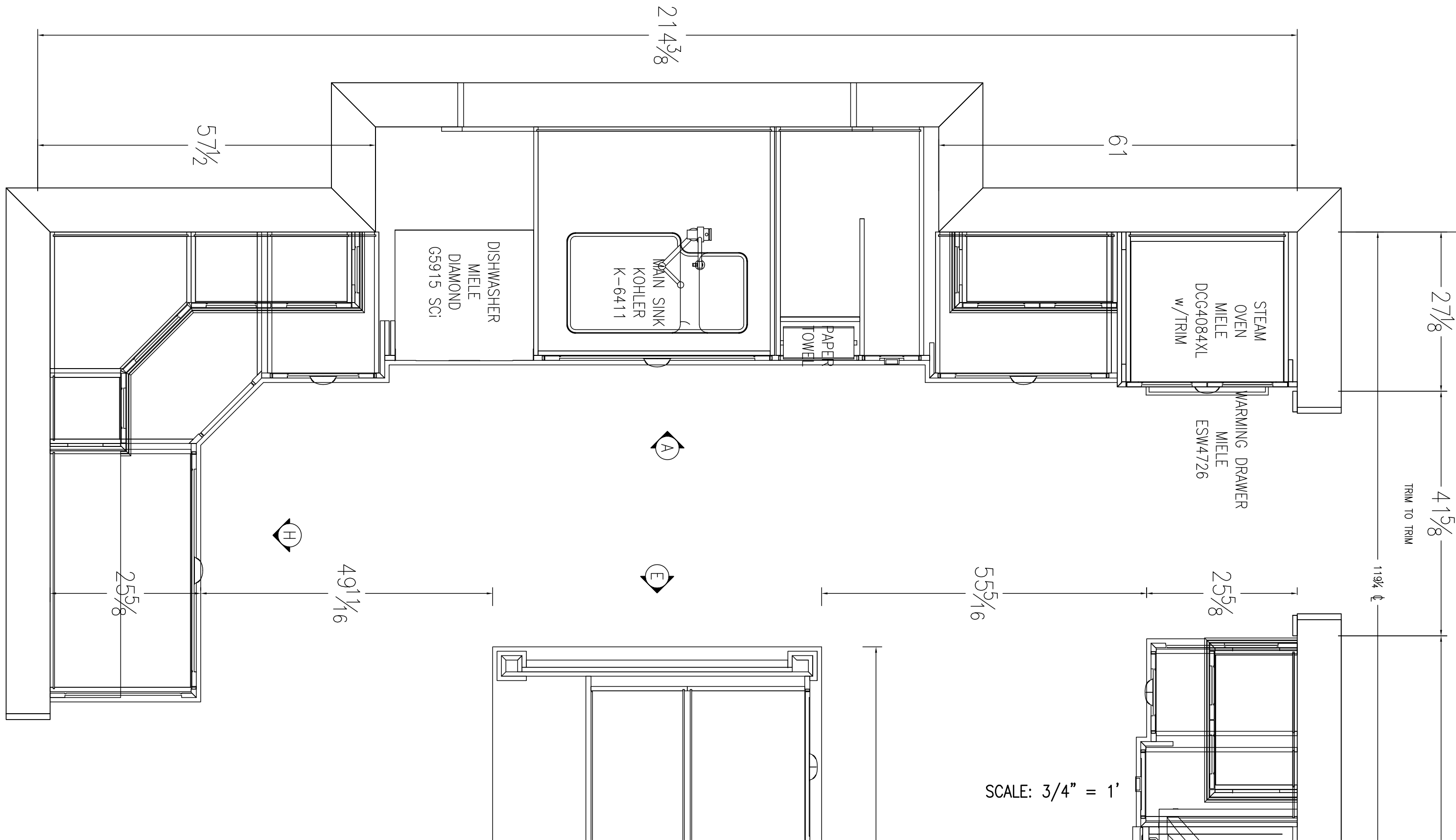


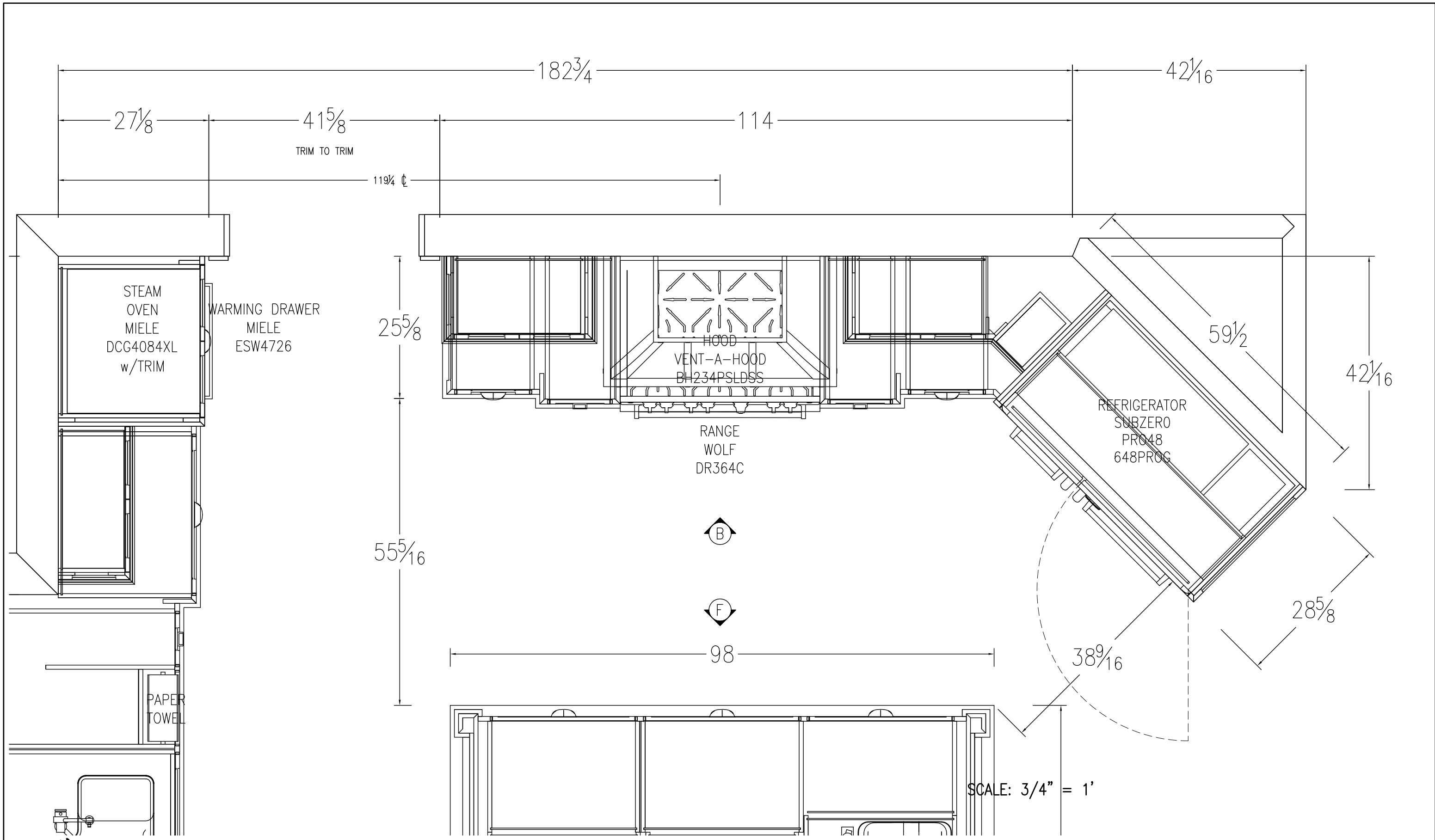
SCALE: 3/8" = 1'

JOB: THUROGOOD	FACE MATERIAL: ----	---	PAGE # ----
ROOM: KITCHEN	PLAN	INTERIOR MATERIAL: MAPLE PLY CLEAR FINISH	FINISH : ----
			Date: 2/19/2014



SCALE: 3/4" = 1'

JOB: THUROGOOD	FACE MATERIAL : ----	---	PAGE # ----
ROOM: RANGE WALL PLAN	INTERIOR MATERIAL : MAPLE PLY CLEAR FINISH	FINISH : ----	Date: 2/19/2014



Northwest Custom Cabinets, Inc.
Fine Custom Cabinetry and Millwork

15609 Peterson Rd. Suite C Burlington WA 98233
www.nwcustomcabinets.com

Phone: (360) 757-8788
Fax: (360) 757-8838

JOB: THUROGOOD

FACE MATERIAL : ----

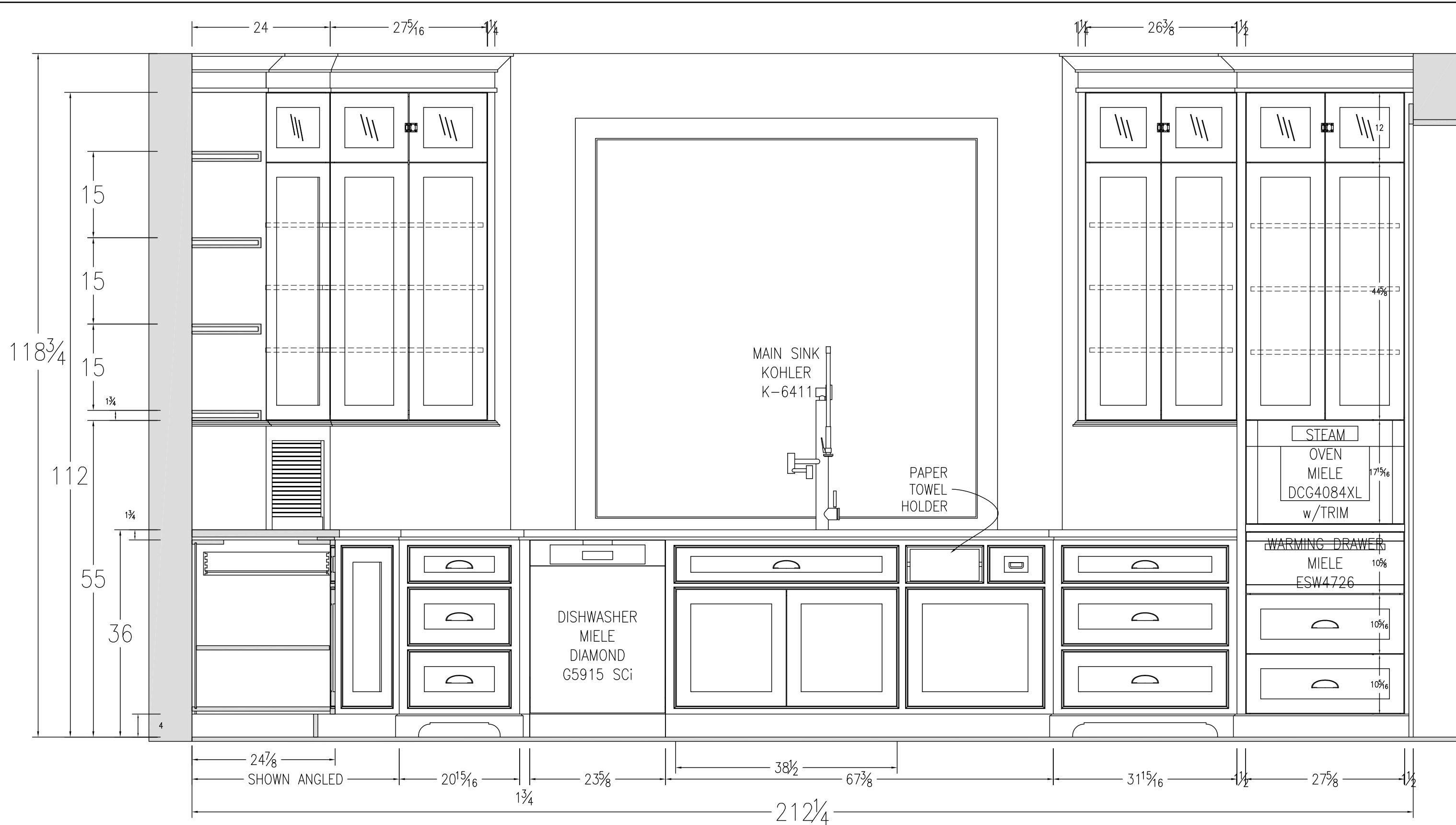
PAGE # ----

ROOM: RANGE WALL PLAN

INTERIOR : MAPLE PLY CLEAR FINISH
MATERIAL

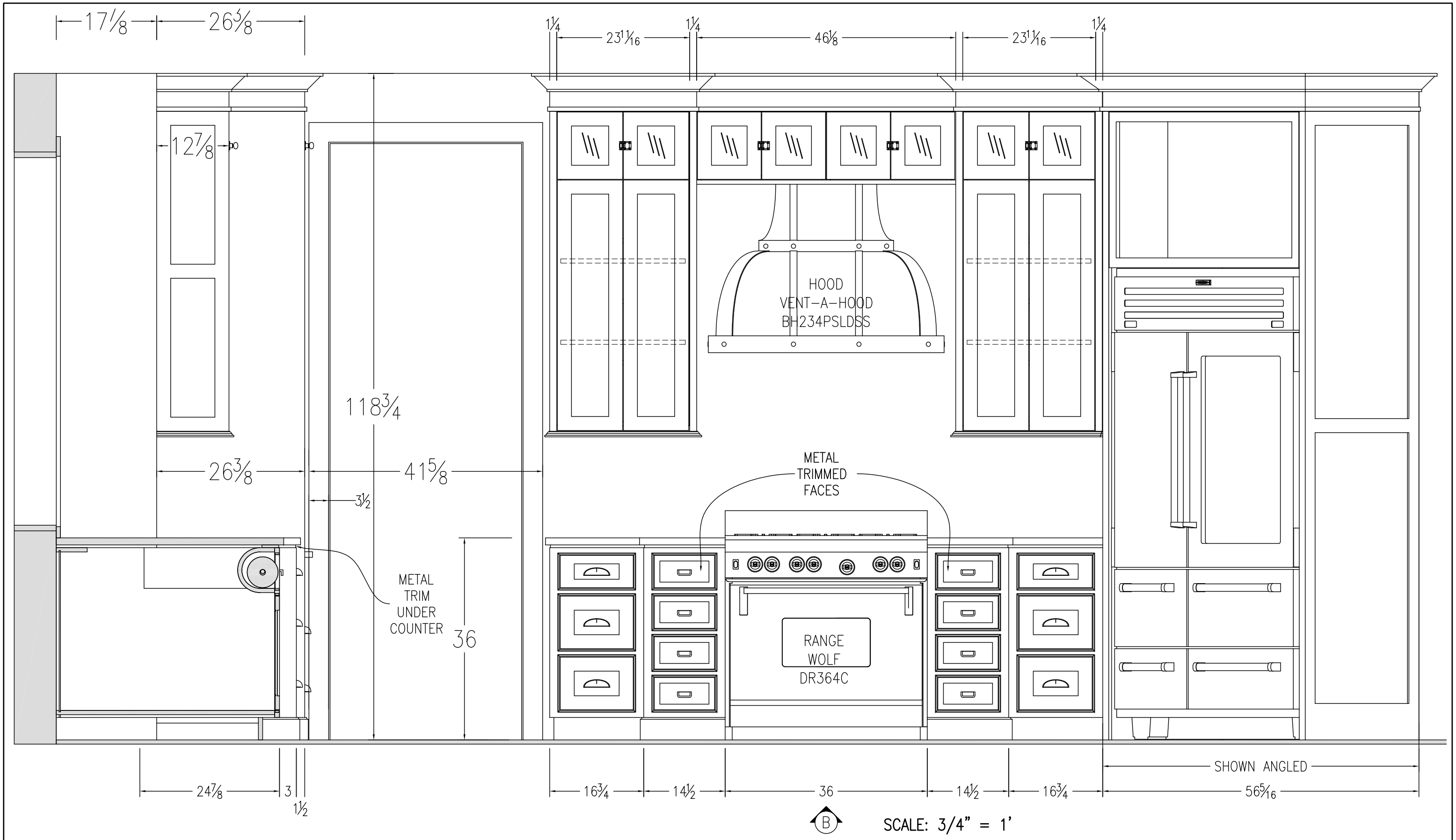
FINISH : ----

Date: 2/19/2014

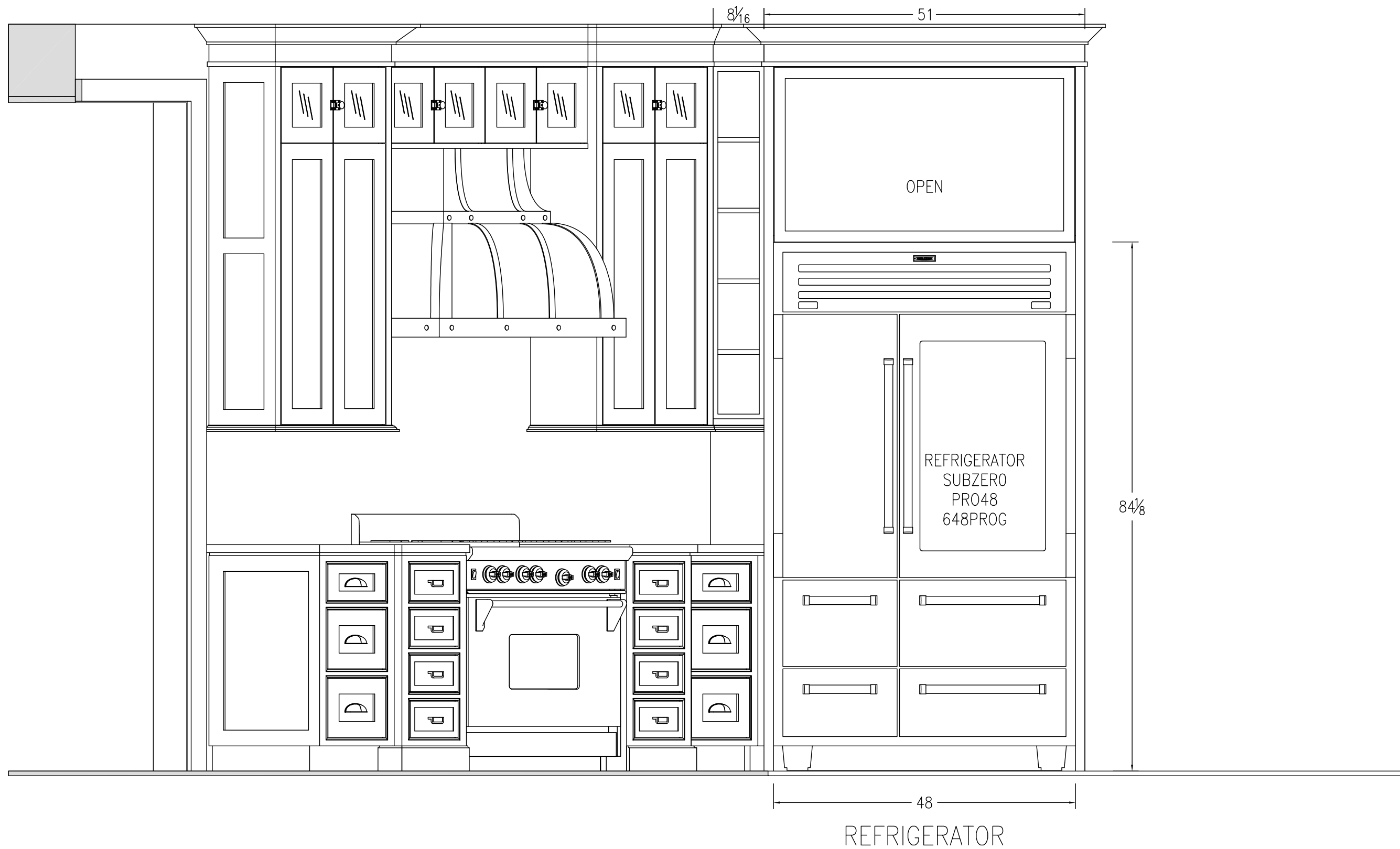


Ⓐ SCALE: 3/4" = 1'

JOB: THUROGOOD	FACE MATERIAL: ----	---	PAGE # ----
ROOM: KITCHEN	ELEV. A	INTERIOR MATERIAL: MAPLE PLY CLEAR FINISH	FINISH : ----
			Date: 2/19/2014

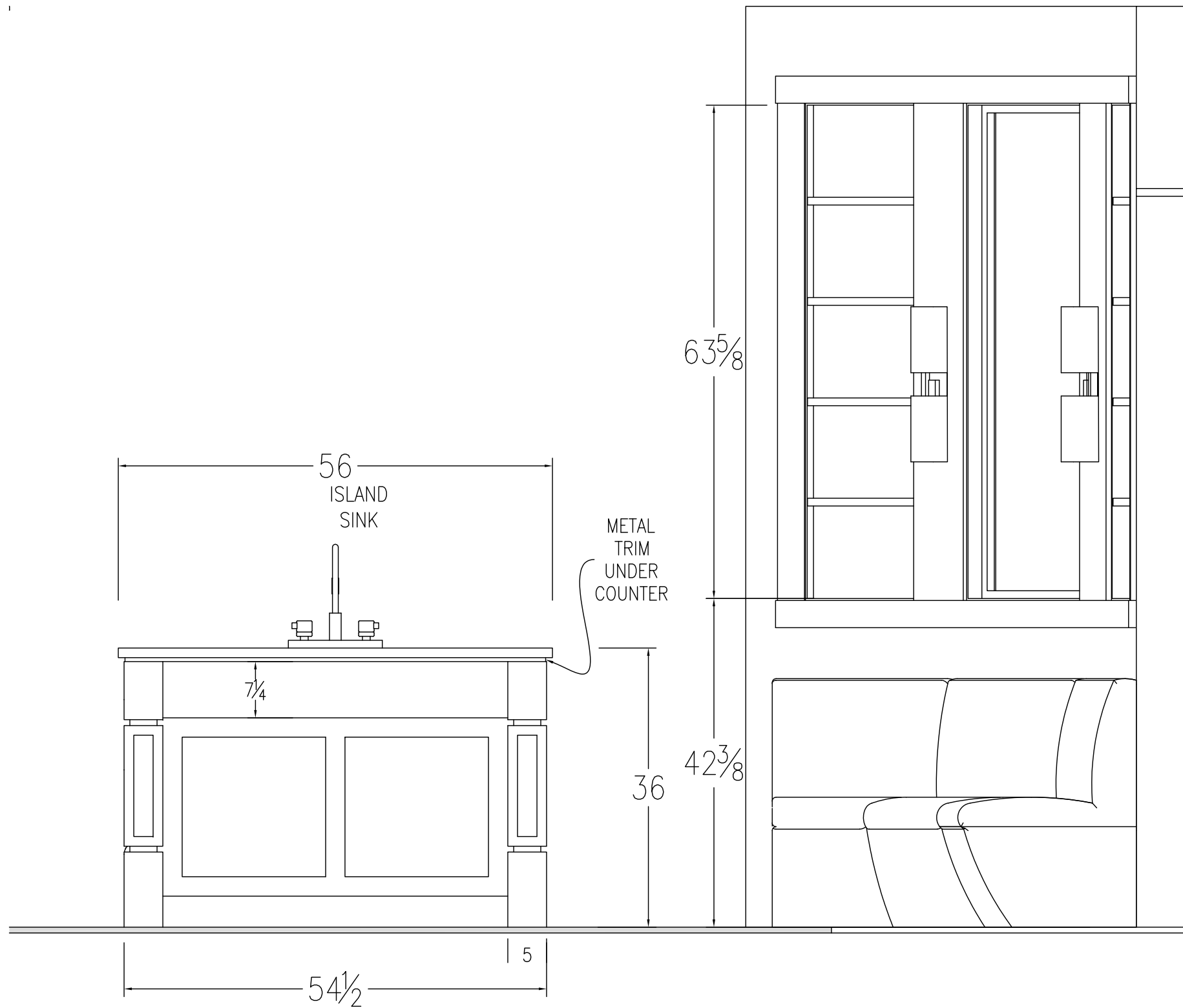


JOB: THUROGOOD	FACE MATERIAL: ----	PAGE # ----
ROOM: KITCHEN	ELEV. B	INTERIOR MATERIAL: MAPLE PLY CLEAR FINISH
		FINISH: ----
		Date: 2/19/2014



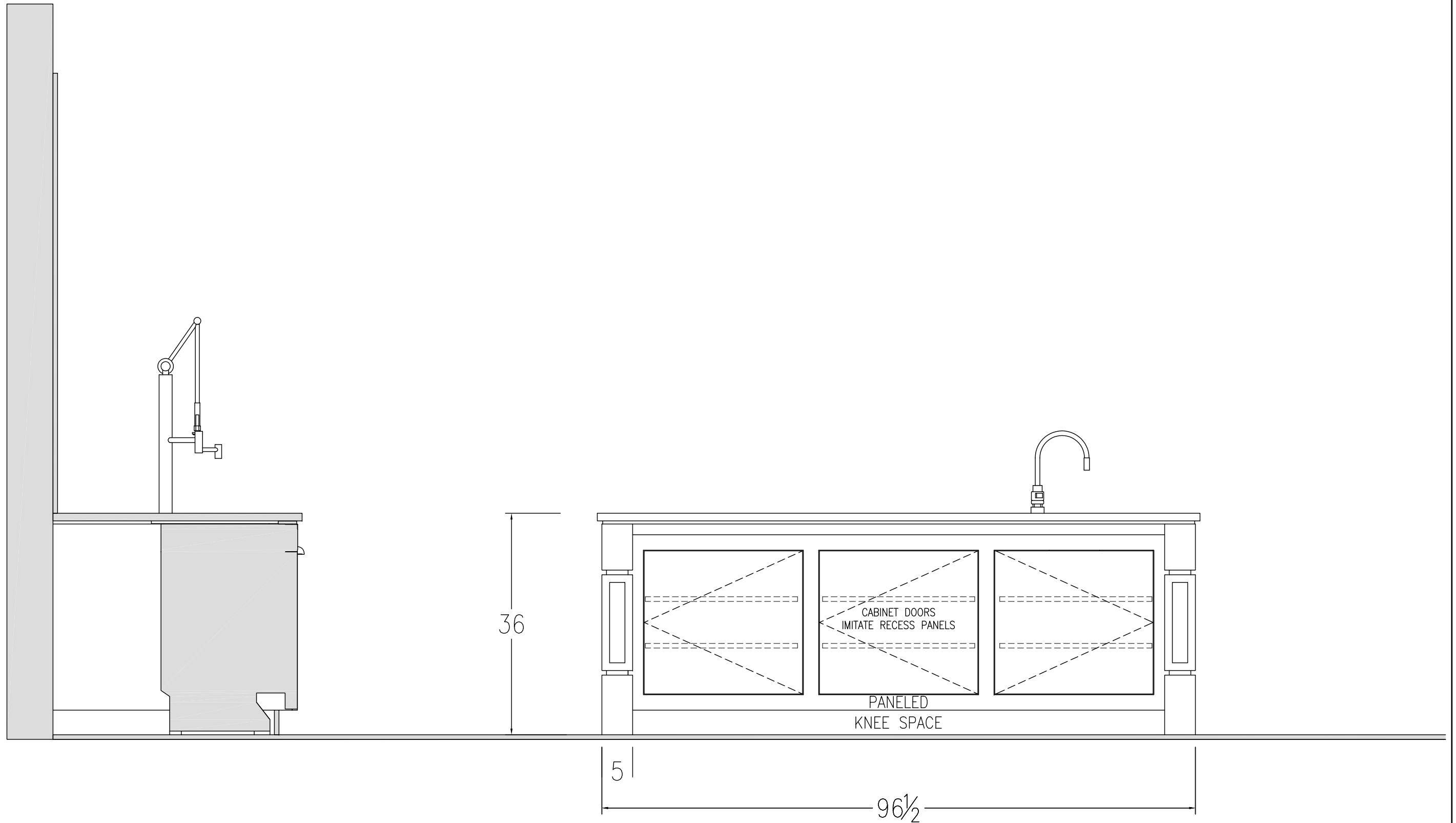
SCALE: 3/4" = 1'

JOB: THUROGOOD	FACE MATERIAL : ----		PAGE # ----
ROOM: KITCHEN	ELEV. REFRIGERATOR	INTERIOR : MAPLE PLY CLEAR FINISH	FINISH : ----
			Date: 2/19/2014



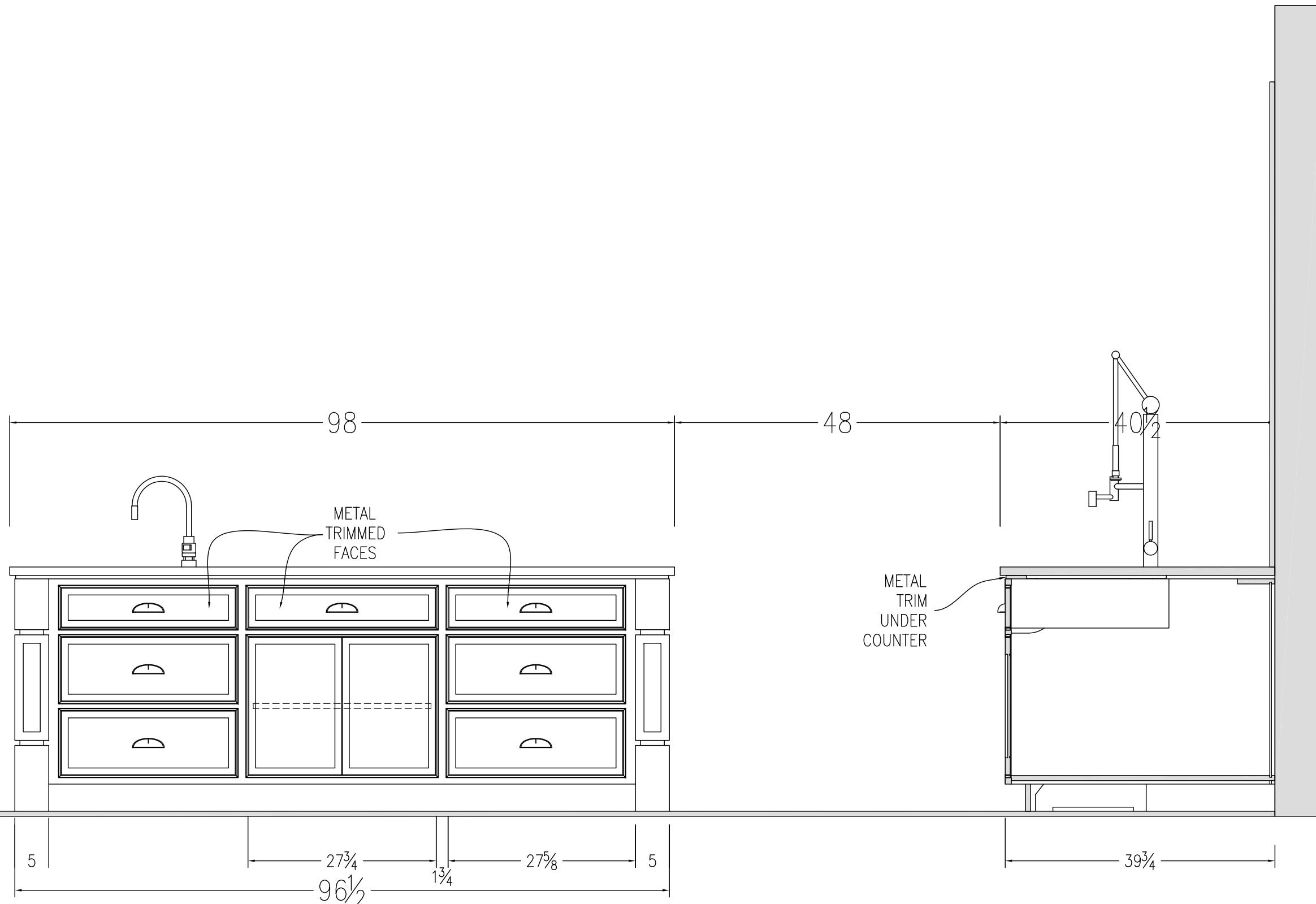
SCALE: 3/4" = 1'

JOB: THUROGOOD	FACE MATERIAL : ----		PAGE # ----
ROOM: KITCHEN	ELEV. C & E	INTERIOR : MAPLE PLY CLEAR FINISH MATERIAL	FINISH : ----
			Date: 2/19/2014



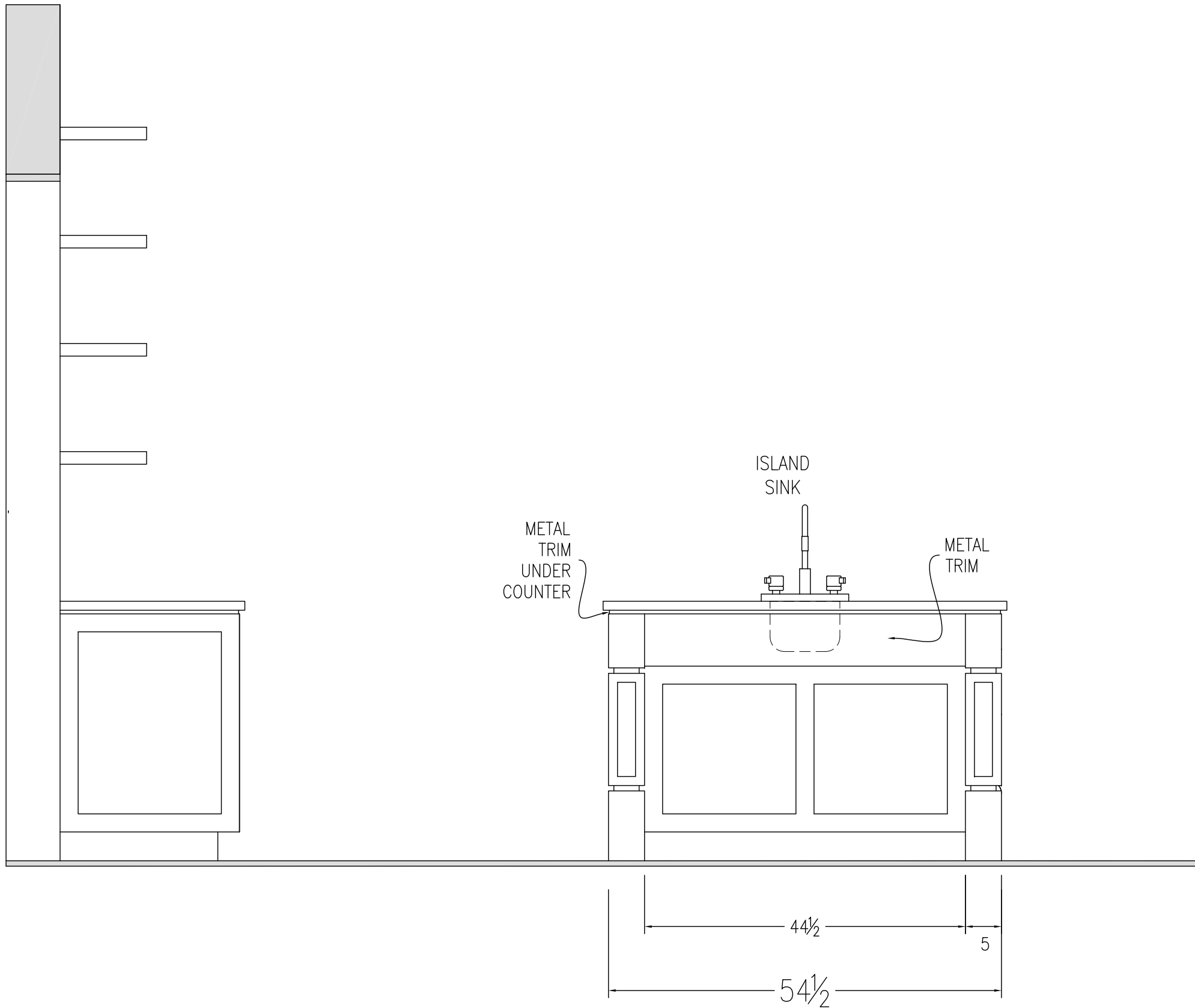
SCALE: 3/4" = 1'

JOB: THUROGOOD	FACE MATERIAL : ----		PAGE # ----
ROOM: KITCHEN ISLAND ELEV. D	INTERIOR MATERIAL : MAPLE PLY CLEAR FINISH	FINISH : ----	Date: 2/19/2014



Ⓢ SCALE: 3/4" = 1'

JOB: THUROGOOD	FACE MATERIAL: ----		
ROOM: KITCHEN ISLAND ELEV. F	INTERIOR MATERIAL: MAPLE PLY CLEAR FINISH	FINISH: ———	Date: 2/19/2014



METAL TRIM UNDER COUNTER

ISLAND SINK

METAL TRIM

44 1/2

5

54 1/2

SCALE: 3/4" = 1'



JOB: THUROGOOD	FACE MATERIAL: ----		
ROOM: KITCHEN ISLAND ELEV. G	INTERIOR MATERIAL: MAPLE PLY CLEAR FINISH	FINISH: ———	Date: 2/19/2014